



Cloud-Clone Corp.

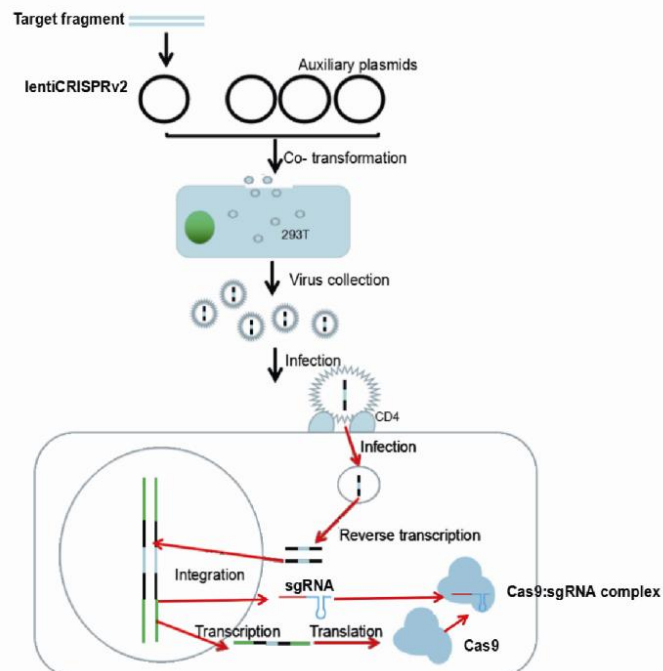
Cloud-Clone has launched the knock-out cell lines validated antibodies

Why did we use knock-out cell lines to validate the antibodies?

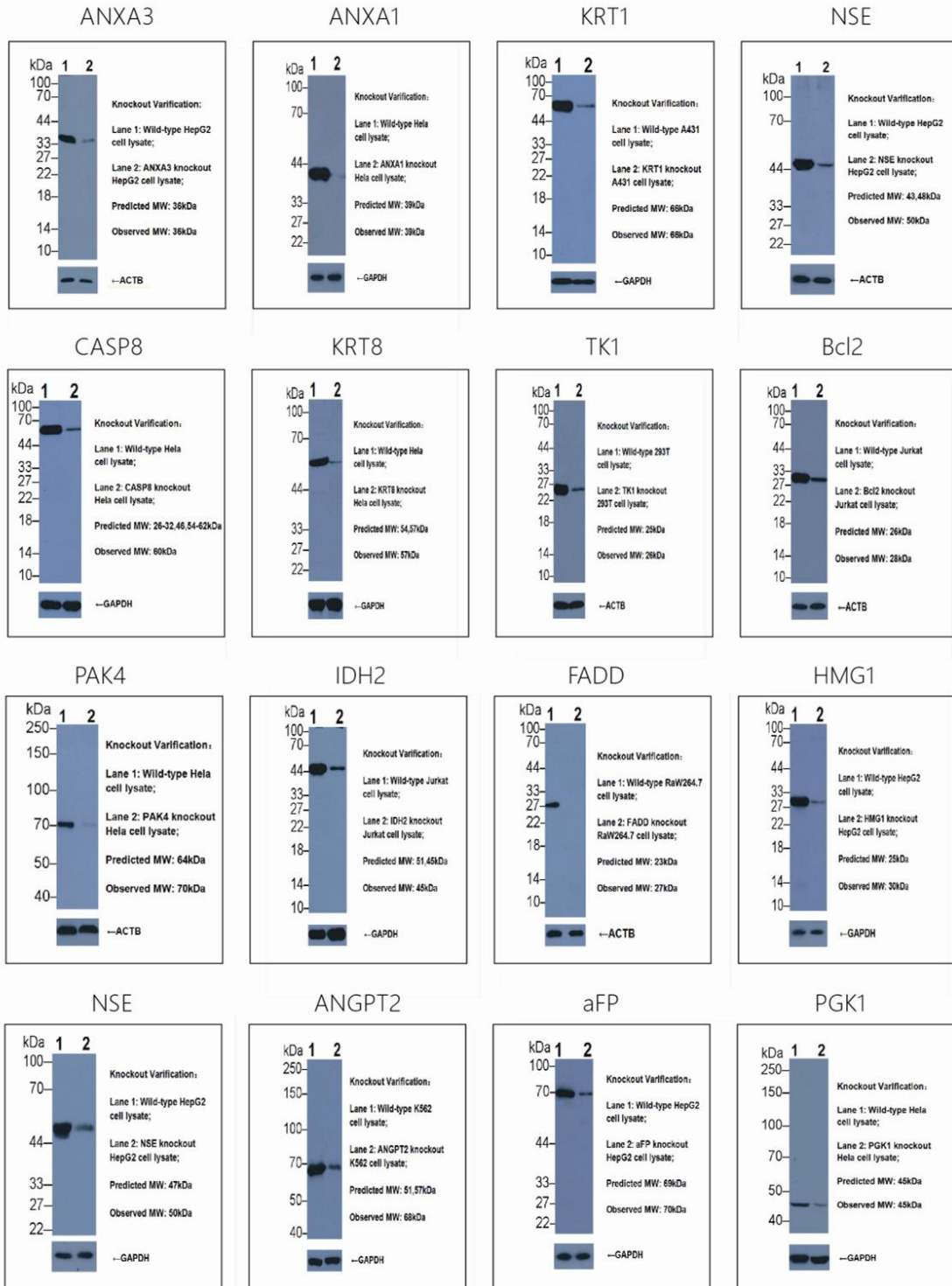
It is known that specificity is the most important property of antibodies, gene knock-out technology, especially knock-out cell lines, is widely recognized as a good method to validate the specificity of antibody, although the procedures are complicated, it is a necessary way to gain more credible data.

How to obtain the knock-out cell lines?

Combined with CRISPR/Cas9 technology platform and lentivirus/adenovirus transfection platform. The image below displays how the CRISPR/Cas9 technology was combined with lentivirus infection system to transfect target cells.



Examples of knock-out validation data



Knock-out validated antibodies from Cloud-Clone

Cat.No.	Target	Knock-out cell lines
MAA788Hu22	Programmed Cell Death Protein 1 Ligand 1 (PDCD1LG1)	MB231
MAB062Hu22	Heat Shock 70kDa Protein 1 Like Protein (HSPA1L)	Raji, HeLa, HepG2
MAC823Hu22	Thymidine Kinase 1, Soluble (TK1)	MCF7, 293T, HeLa
MAE786Hu21	Annexin A3 (ANXA3)	HepG2
MAE787Hu22	Annexin A1 (ANXA1)	HeLa, HepG2
PAA009Hu02	Angiopoietin 2 (ANGPT2)	K562
PAA150Hu01	Carcinoembryonic Antigen (CEA)	HeLa
PAA153Hu01	Alpha-Fetoprotein (aFP)	HepG2
PAA492Hu01	Keratin 1 (KRT1)	A431, A375, H460, HeLa
PAA537Hu02	Enolase, Neuron Specific (NSE)	HepG2, 293T, A549, MCF7
PAA651Hu01	Hyaluronan Binding Protein 1 (HABP1)	HeLa, A549
PAA751Hu01	Programmed Cell Death Protein 1 (PDCD1)	Jurkat
PAA778Hu01	B-Cell Leukemia/Lymphoma 2 (Bcl2)	Jurkat, U-937
PAA853Hu03	Caspase 8 (CASP8)	HeLa, HepG2
PAB215Hu03	Fibrinogen Beta (FGb)	HeLa
PAB231Hu01	Keratin 18 (KRT18)	HeLa, MCF7
PAB233Hu01	Cyclin Dependent Kinase 4 (CDK4)	HeLa, MCF7
PAB698Hu01	Lactate Dehydrogenase B (LDHB)	Jurkat, PC3, A431
PAB769Hu01	S100 Calcium Binding Protein A6 (S100A6)	HeLa, A549, MCF7
PAB905Hu01	Interleukin 7 Receptor (IL7R)	K562, Jurkat
PAC598Hu03	Vanin 1 (VNN1)	BXPC-3, PC-3
PAE528Hu01	Phosphoglycerate Mutase 1, Brain (PGAM1)	A431
PAE748Hu01	Karyopherin Alpha 2 (KPN2)	HepG2, 293T, Raji
PAF460Hu01	Folate Receptor 1, Adult (FOLR1)	HeLa, MCF7
PAA399Mu01	High Mobility Group Protein 1 (HMG1)	HepG2
PAA700Mu01	Membrane Protein, Palmitoylated 6 (MPP6)	HepG2, 293T
PAK078Mu01	Fas Associating Death Domain Containing Protein (FADD)	RaW264.7
PAA849Ra01	Glycogen Phosphorylase, Liver (PYGL)	HepG2
PAB083Ra01	Superoxide Dismutase 2, Mitochondrial (SOD2)	HeLa, MCF7
PAA929Bo01	Retinol Binding Protein 4, Plasma (RBP4)	HepG2

For more products or information, please contact us !

CLOUD-CLONE CORP.

23603 W. Fernhurst Dr., Unit 2201, Katy, TX 77494, USA

Tel: 001-832-538-0970 | Toll free: 888-960-7402 (In the USA)

Fax: 001-832-538-0088 | Email: mail@cloud-clone.us

www.cloud-clone.us (Reagent) www.uscnk.us (Equipment)



Connect with us for interction