

Direct neurotransmitter imaging

16 validated antibodies and a ready-to-use staining kit

Applicable to any species | Validated protocols for cells & tissues | Different hosts for multiplexing

Primary antibodies compatible with the STAINperfect kit

Dopamine

Dopamine rabbit pAb - IS1005

Serotonin

Serotonin rabbit pAb - IS1007

Serotonin mouse mAb - IS040

Serotonin goat pAb - IS1035

GABA

GABA rabbit pAb - IS1006

GABA mouse mAb - IS039

GABA chicken pAb - IS1036

Glutamate

D-Glutamate rabbit pAb - IS1002

L-Glutamate rabbit pAb - IS1001

L-Glutamate mouse mAb - IS018

Glycine

Glycine rabbit pAb - IS1034

Histamine

Histamine rabbit pAb - IS1039

Norepinephrine

L-Norepinephrine rabbit pAb - IS1042

Octopamine

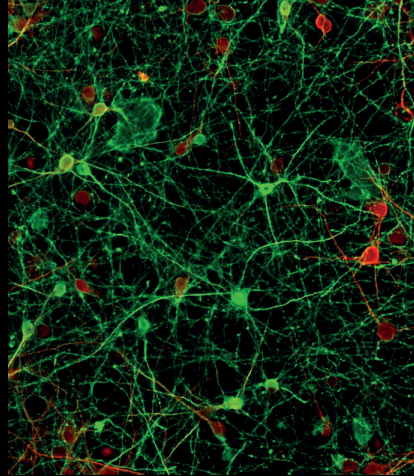
Octopamine rabbit pAb - IS1033

Serine

D-Serine rabbit pAb - IS1004

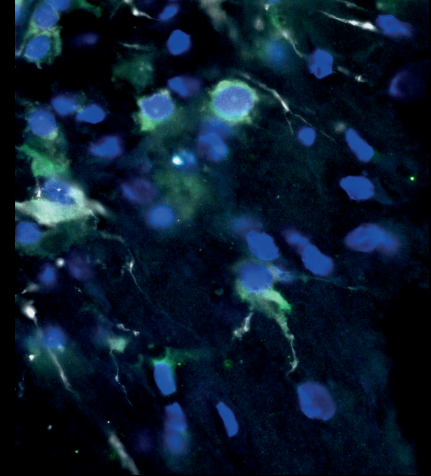
L-Serine rabbit pAb - IS1003

2D cell cultures



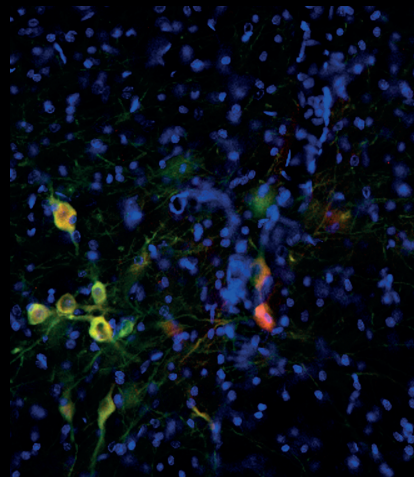
GABA (green), MAP2 (red) in rat primary cortical culture.

Organoids



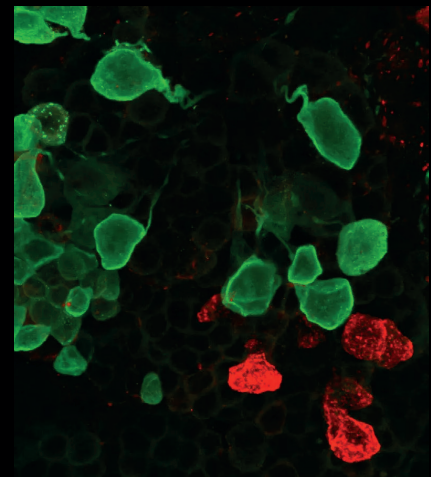
Dopamine (green), TH (white), Hoechst (blue) in 30-day brain organoid (hiPSC). Courtesy S. Nickels from the Schwamborn lab

Tissue sections



Dopamine (red), TH (green), Hoechst (blue) in the substantia nigra pars compacta (rat coronal brain section).

Whole mounts



Octopamine (green) and Serotonin (red) in crayfish eyestalk.

Cited in 35 papers, including

STEM CELL
REPORTS

STEM CELL
RESEARCH



frontiers
in Neuroscience

nature
ecology & evolution

Quantify neurotransmitters easily by ELISA

Amino acid & monoamine neurotransmitters

- Dopamine
- Epinephrine
- Norepinephrine
- GABA
- L-Glutamate
- Serotonin
- Histamine
- L- & D-Serine

Step-by-step protocols

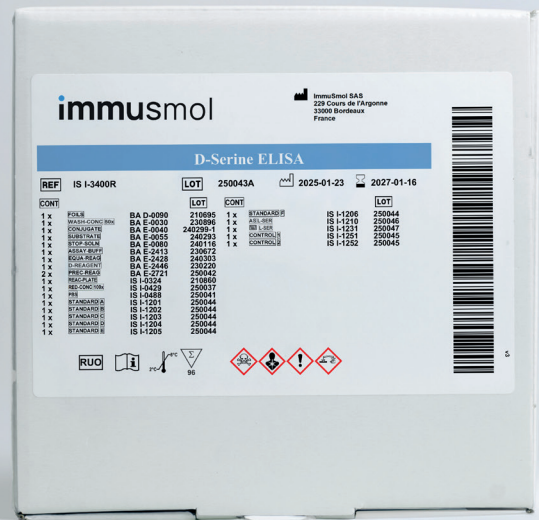
Analyze biological fluids, homogenates & supernatants

Accurate results

Trust your data with ELISA kits cross-validated by LC-MS

Preclinical & clinical applications

Work with small-volume samples (down to 1µL) from any species



FLEXIBILITY FOR RESEARCH

Ultra-sensitive ELISA kits

Any type of sample, low minimal volumes

Serotonin	1µL	BA-E-5900R
Dopamine	1µL	BA-E-5300R
Epinephrine	1µL	BA-E-5100R
Norepinephrine	1µL	BA-E-5200R
GABA	IVD 100µL	BA-E-2500R
L-Glutamate	IVD 100µL	BA-E-2400R
Histamine	10µL	BA-E-5800R
L-Serine	20µL	IS-I-1200R
D-Serine	25µL	IS-I-3400R
2 Catecholamines	1µL	BA-E-5400R
3 Catecholamines	1µL	BA-E-5600R

BIOLOGICAL FLUIDS

Fast IVD ELISA kits

For plasma, serum and urine, available as RUO & IVD

Serotonin	IVD	75 min	BA-E-8900
Dopamine	IVD	4h	BA-E-6300
Epinephrine	IVD	4h	BA-E-6100
Norepinephrine	IVD	4h	BA-E-6200
Histamine	IVD	5h	BA-E-1000
2 Catecholamines	IVD	4h	BA-E-6500
3 Catecholamines	IVD	5h	BA-E-6600

IVDR certification is valid in the EU/EEA only. Outside the EU/EEA, local regulatory authorization may be required for diagnostic use; we can assist.

>165 literature citations