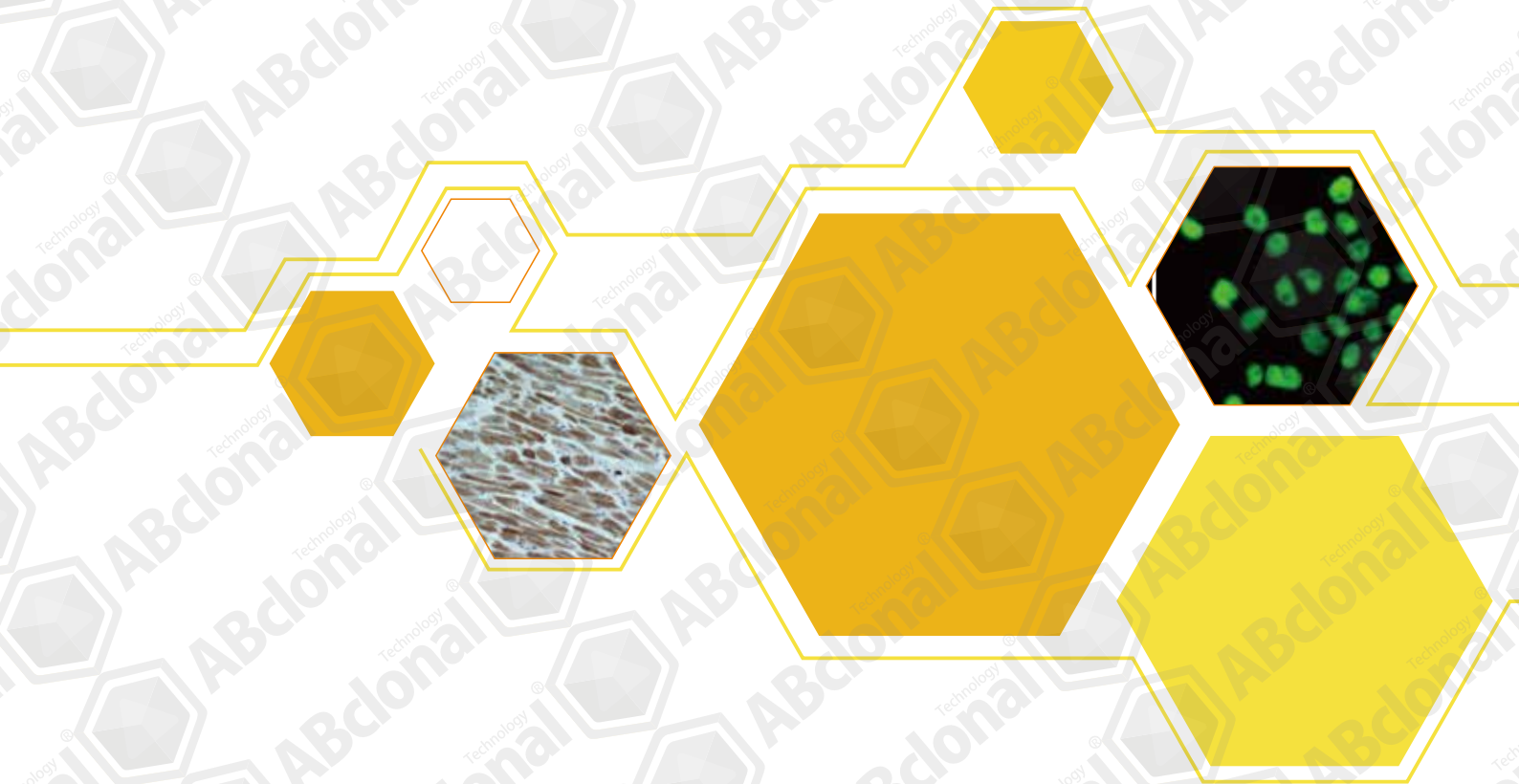




ABclonal[®] Technology

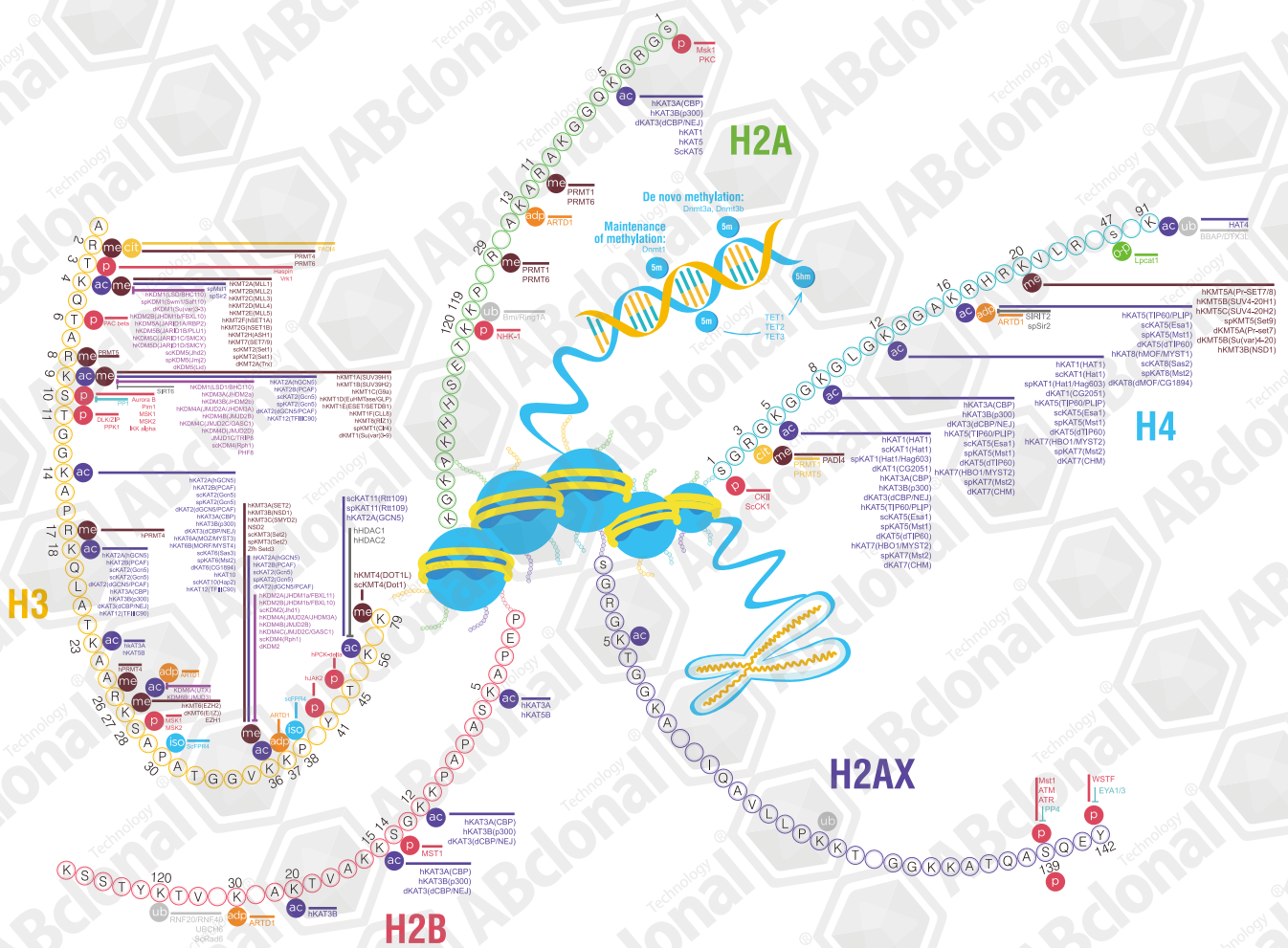
EPIGENETICS

ABclonal Antibody (IV)



Key | Histone and DNA modifications

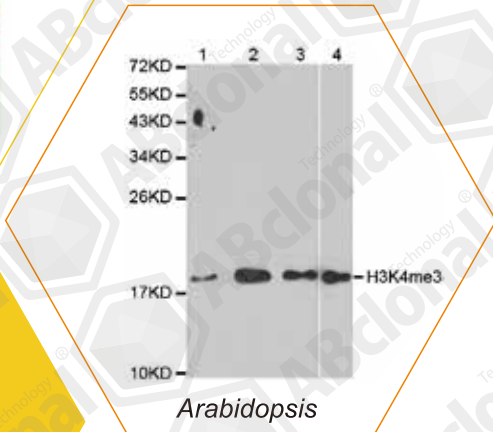
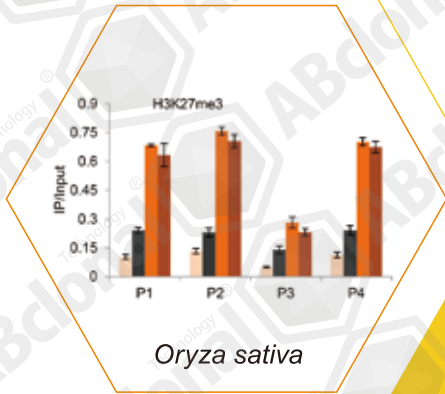
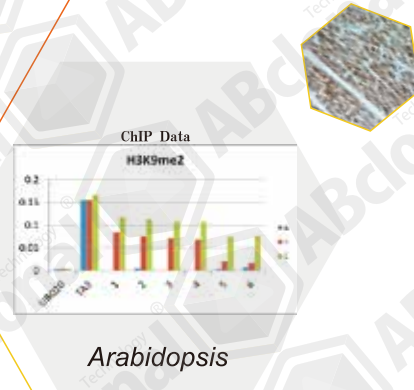
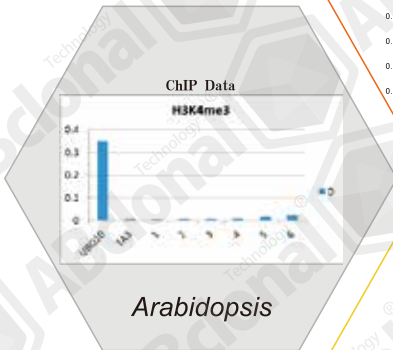
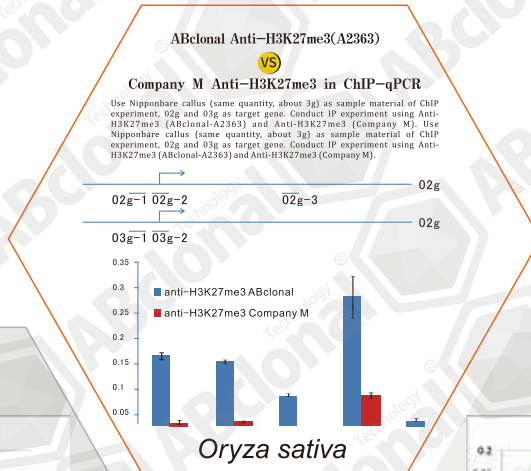
- ac Acetylation
- cit Deimination
- Deacetylation
- P Phosphorylation
- me Methylation
- ub Ubiquitination
- Demethylation
- iso Isomerization
- O-palmitoylation
- adp ADP Ribosylation
- Dephosphorylation
- 5m 5-Methylcytosine
- 5hm 5-Hydroxymethylcytosine



Epigenetics is the study of changes in gene expression that are caused by certain base pairs in DNA or RNA, being “turned off” or “turned on,” through chemical reactions. In biology, epigenetics is the study of heritable changes that do not involve changes to the underlying DNA sequence; to a lesser extent, epigenetics also describes the study of stability and long-term alterations in the transcriptional potential of a cell that are not necessarily heritable.

Epigenetic changes can modify the activation of certain genes, but not the sequence of DNA. Additionally, the chromatin proteins associated with DNA may be activated or silenced. This is why the different cells in a multi-cellular organism only express the genes that are necessary for their own activities.

Plants Histone Modification Antibodies



Catalog	Name	Applications	Cross-Reactivity
A2355	H3K4me1	WB IHC IF IP ChIP	H M R Other (Wide Range)
A2356	H3K4me2	WB IHC IF IP ChIP ChIPseq	H M R Other (Wide Range)
A2357	H3K4me3	WB IHC IF IP ChIP ChIPseq	H M R Other (Wide Range)
A2358	H3K9me1	WB IHC IF IP ChIP ChIPseq	H M R Other (Wide Range)
A2359	H3K9me2	WB IHC IF IP ChIP ChIPseq	H M R Other (Wide Range)
A2360	H3K9me3	WB IHC IF IP ChIP ChIPseq	H M R Other (Wide Range)
A5277	H3K14me1	WB IHC IF	H M R Other (Wide Range)
A5278	H3K14me2	WB IHC IF IP ChIP ChIPseq	H M R Other (Wide Range)
A5279	H3K14me3	WB IHC IF IP ChIP ChIPseq	H M R Other (Wide Range)
A10937	H3K18me1	WB IHC IF	H M R
A2361	H3K27me1	WB IHC IF IP ChIP ChIPseq	H M R Other (Wide Range)
A2362	H3K27me2	WB IHC IF IP ChIP ChIPseq	H M R Other (Wide Range)
A2363	H3K27me3	WB IHC IF IP ChIP ChIPseq	H M R Other (Wide Range)
A16199	H3K27me3	WB IHC IF IP ChIP	H

Western blot analysis of extracts of various cell lines, using DiMethyl-Histone H3-K4 antibody (A2355).

Dot-blot analysis of all sorts of methylation peptides using DiMethyl-Histone H3-K4 antibody (A2355).

Chromatin immunoprecipitation analysis extracts of 293 cell line, using DiMethyl-Histone H3-K4 antibody (A2355) and rabbit IgG.

A2355

Western blot analysis of extracts of various cell lines, using MonoMethyl-Histone H3-K9 antibody (A2358).

Dot-blot analysis of all sorts of methylation peptides using MonoMethyl-Histone H3-K9 antibody (A2358).

Chromatin immunoprecipitation analysis extracts of 293 cell line, using MonoMethyl-Histone H3-K9 antibody (A2358) and rabbit IgG.

A2358

Immunohistochemistry of paraffin-embedded rat liver using DiMethyl-Histone H3-K9 antibody (A2359) at dilution of 1:200 (40x lens).

Dot-blot analysis of all sorts of methylation peptides using DiMethyl-Histone H3-K9 antibody (A2359).

Chromatin immunoprecipitation analysis extracts of 293 cell line, using DiMethyl-Histone H3-K9 antibody (A2359) and rabbit IgG.

A2359

Western blot analysis of extracts of various cell lines, using TriMethyl-Histone H3-K9 antibody (A2360) at 1:1000 dilution.

Dot-blot analysis of all sorts of methylation peptides using TriMethyl-Histone H3-K9 antibody (A2360).

Chromatin immunoprecipitation analysis extracts of 293T cells, using TriMethyl-Histone H3-K9 antibody (A2360) and rabbit IgG.

A2360

Immunohistochemistry of paraffin-embedded rat brain using MonoMethyl-Histone H3-K27 antibody (A2361) at dilution of 1:200 (40x lens).

Dot-blot analysis of all sorts of methylation peptides using MonoMethyl-Histone H3-K27 antibody (A2361).

Chromatin immunoprecipitation analysis extracts of 293T cells, using MonoMethyl-Histone H3-K27 antibody (A2361) and rabbit IgG.

A2361

Western blot analysis of extracts of various cell lines, using TriMethyl-Histone H3-K27 antibody (A2363) at 1:1000 dilution.

Dot-blot analysis of all sorts of methylation peptides using TriMethyl-Histone H3-K27 antibody (A2363).

Chromatin immunoprecipitation analysis extracts of 293T cells, using TriMethyl-Histone H3-K27 antibody (A2363) and rabbit IgG.

A2363

Catalog	Name	Applications	Cross-Reactivity
A2364	H3K36me1	WB IHC IF IP ChIP ChIPseq	H M R Other (Wide Range)
A2365	H3K36me2	WB IHC IF IP ChIP ChIPseq	H M R Other (Wide Range)
A2366	H3K36me3	WB IHC IF IP ChIP ChIPseq	H M R Other (Wide Range)
A7259	H3K64me3	WB	H M R Other (Wide Range)
A2367	H3K79me1	WB IHC IF IP ChIP ChIPseq	H M R Other (Wide Range)
A2368	H3K79me2	WB IHC IF IP ChIP ChIPseq	H M R Other (Wide Range)
A2369	H3K79me3	WB IHC IF IP ChIP ChIPseq	H M R Other (Wide Range)
A10531	H3K79me1/H3K79me2	WB IHC	H M R
A2373	H3R2me2s	WB IHC IF IP ChIP ChIPseq	H M R Other (Wide Range)
A3155	H3R2me2a	WB IHC IF IP ChIP ChIPseq	H M R Other (Wide Range)
A2374	H3R8me2s	WB IHC IF IP ChIP ChIPseq	H M R Other (Wide Range)
A3151	H3R17me1	WB IHC IF IP ChIP ChIPseq	H M R Other (Wide Range)
A2421	H3R17me2a	WB IHC IF IP	H M R Other (Wide Range)
A2375	H3R26me2a	WB IF IP	H M R Other (Wide Range)

Western blot analysis of extracts of various cell lines, using MonoMethyl-Histone H3-K36 antibody (A2364).

Dot-blot analysis of all sorts of methylation peptides using MonoMethyl-Histone H3-K36 antibody (A2364).

Immunofluorescence analysis of 293T cells using MonoMethyl-Histone H3-K36 antibody (A2364). Blue: DAPI for nuclear staining.

A2364

Western blot analysis of extracts of various cell lines, using TriMethyl-Histone H3-K36 antibody (A2366).

Dot-blot analysis of all sorts of methylation peptides using TriMethyl-Histone H3-K36 antibody (A2366).

Chromatin immunoprecipitation analysis extracts of 293T cells, using TriMethyl-Histone H3-K36 antibody (A2366) and rabbit IgG.

A2366

Western blot analysis of extracts of various cell lines, using MonoMethyl-Histone H3-K79 antibody (A2367).

Dot-blot analysis of all sorts of methylation peptides using MonoMethyl-Histone H3-K79 antibody (A2367).

Chromatin immunoprecipitation analysis extracts of 293T cells, using MonoMethyl-Histone H3-K79 antibody (A2367) and rabbit IgG.

A2367

Western blot analysis of extracts of various cell lines, using Symmetric DiMethyl-Histone H3-R2 antibody (A2373).

Dot-blot analysis of all sorts of methylation peptides using Symmetric DiMethyl-Histone H3-R2 antibody (A2373).

Immunofluorescence analysis of 293T cells using Symmetric DiMethyl-Histone H3-R2 antibody (A2373). Blue: DAPI for nuclear staining.

A2373

Western blot analysis of extracts of various cell lines, using Symmetric DiMethyl-Histone H3-R8 antibody (A2374).

Dot-blot analysis of all sorts of methylation peptides using Symmetric DiMethyl-Histone H3-R8 antibody (A2374).

Immunofluorescence analysis of 293T cells using Symmetric DiMethyl-Histone H3-R8 antibody (A2374). Blue: DAPI for nuclear staining.

A2374

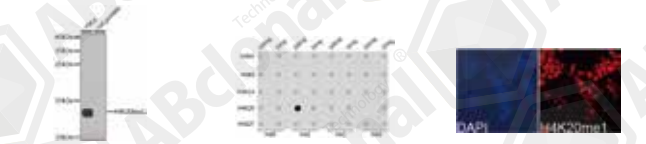
Western blot analysis of extracts of various cell lines, using Asymmetric DiMethyl-Histone H3-R17 antibody (A2421).

Dot-blot analysis of all sorts of methylation peptides using Asymmetric DiMethyl-Histone H3-R17 antibody (A2421).

Immunofluorescence analysis of 293T cells using Asymmetric DiMethyl-Histone H3-R17 antibody (A2421). Blue: DAPI for nuclear staining.

A2421

Catalog	Name	Applications	Cross-Reactivity
A2370	H4K20me1	WB IHC IF IP ChIP ChIPseq	H M R Other (Wide Range)
A2371	H4K20me2	WB IHC IF IP ChIP ChIPseq	H M R Other (Wide Range)
A2372	H4K20me3	WB IHC IF IP ChIP ChIPseq	H M R Other (Wide Range)
A15620	H2A K5ac	WB	H M R
A11018	H2A K9ac	WB IHC IF	H M R
A15621	H2B K5ac	WB	H M R Other (Wide Range)
A15619	H2B K12ac	WB	M R
A15622	H2B K15ac	WB	H M R Other (Wide Range)
A16078	H3K4ac	WB	M R
A7255	H3K9ac	WB IHC IF IP ChIP ChIPseq	H M R Other (Wide Range)
A7254	H3K14ac	WB IHC IF IP ChIP ChIPseq	H M R Other (Wide Range)
A7257	H3K18ac	WB IHC IF IP ChIP ChIPseq	H M R Other (Wide Range)
A7253	H3K27ac	WB IHC IF IP ChIP ChIPseq	H M R Other (Wide Range)
A16077	H3K36ac	WB	H M R Other (Wide Range)

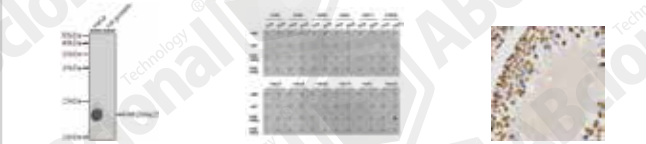


Western blot analysis of extracts of various cell lines, using MonoMethyl-Histone H4-K20 antibody (A2370).

Dot-blot analysis of all sorts of methylation peptides using MonoMethyl-Histone H4-K20 antibody (A2370).

Immunofluorescence analysis of 293T cells using MonoMethyl-Histone H4-K20 antibody (A2370). Blue: DAPI for nuclear staining.

A2370




Western blot analysis of extracts of various cell lines, using DiMethyl-Histone H4-K20 antibody (A2371).

Dot-blot analysis of all sorts of methylation peptides using DiMethyl-Histone H4-K20 antibody (A2371).

Immunohistochemistry of paraffin-embedded rat testis using DiMethyl-Histone H4-K20 antibody (A2371) at dilution of 1:200 (40x lens).

A2371




Western blot analysis of extracts of various cell lines, using TriMethyl-Histone H4-K20 antibody (A2372) at 1:1000 dilution.

Dot-blot analysis of all sorts of methylation peptides using TriMethyl-Histone H4-K20 antibody (A2372).

Immunohistochemistry of paraffin-embedded human kidney cancer using TriMethyl-Histone H4-K20 antibody (A2372) at dilution of 1:200 (40x lens).

A2372

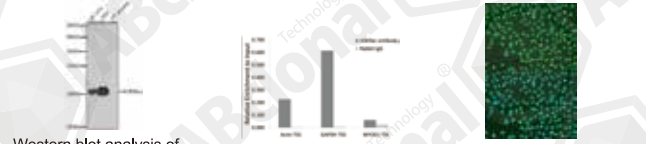


Western blot analysis of extracts of various cell lines, using Acetyl-Histone H2A-K9 antibody (A11018).

Immunohistochemistry of paraffin-embedded mouse colon using Acetyl-Histone H2A-K9 antibody (A11018) at dilution of 1:100 (40x lens).

Immunofluorescence analysis of A549 cells using Acetyl-Histone H2A-K9 antibody (A11018).

A11018




Western blot analysis of extracts of various cell lines, using Acetyl-Histone H3-K9 antibody (A7255) at 1:1000 dilution.

Chromatin immunoprecipitation analysis extracts of 293 cell line, using H3K9ac antibody (A7255) and rabbit IgG.

Immunofluorescence analysis of U2OS cells using Acetyl-Histone H3-K9 antibody (A7255) at dilution of 1:100. Blue: DAPI for nuclear staining.

A7255




Western blot analysis of extracts of various cell lines, using Acetyl-Histone H3-K18 antibody (A7257) at 1:1000 dilution.

Immunohistochemistry of paraffin-embedded mouse brain using H3K18ac antibody (A7257) at dilution of 1:100 (40x lens).


A7257

Catalog	Name	Applications	Cross-Reactivity
A7256	H3K56ac	WB IHC IF IP ChIP ChIPseq	H M R Other (Wide Range)
A11015	H4K5ac	WB IHC IF IP	H M R
A15233	H4K5ac	WB	H R
A7258	H4K8ac	WB IHC IF IP ChIP ChIPseq	H M R Other (Wide Range)
A5280	H4K16ac	WB	H M
AP0197	Phospho-HIST1H3J-S10	WB IHC	H M R
AP0361	Phospho-HIST1H3J-T11	WB	H M R
AP0486	Phospho-Histone H3.3-S32	WB	H M R
AP0638	Phospho-Histone H1.3-T17/Histone H1.4-T17	WB IHC IF	H M R
AP0840	Phospho-Histone H3-S10	WB	H
AP0639	Phospho-Histone H3-S10	WB IHC IF IP	H M R
AP0839	Phospho-Histone H3-S28	WB	H M
AP0640	Phospho-Histone H2AFX-S139	WB IHC IF IP	H M R
AP0846	Phospho-HIST1H3A-T3	WB	H M R



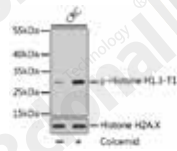
Western blot analysis of extracts of various cell lines, using Acetyl-Histone H4-K16 antibody (A5280) at 1:1000 dilution.

A5280



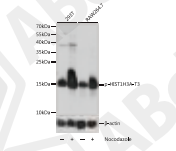
Western blot analysis of extracts of various cell lines, using Acetyl-Histone H4-K5 antibody (A15233) at 1:1000 dilution.

A15233



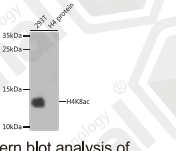

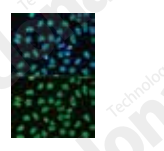
Western blot analysis of extracts of various cells, using Phospho-Histone H1.3-T17/Histone H1.4-T17 antibody (AP0638).

AP0638



Western blot analysis of extracts of various cells, using Phospho-HIST1H3A-T3 pAb (AP0846).

AP0846

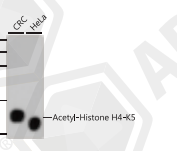






Western blot analysis of extracts of various cell lines, using Acetyl-Histone H4-K8 antibody (A7258) at 1:1000 dilution.

Chromatin immunoprecipitation analysis extracts of 293 cell line, using H4K8ac antibody (A7258) and rabbit IgG.

Immunofluorescence analysis of HeLa cells using Acetyl-Histone H4-K8 antibody (A7258). Blue: DAPI for nuclear staining.

A7258

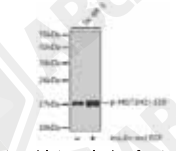





Western blot analysis of extracts of various cell lines, using Acetyl-Histone H4-K5 antibody (A11015).

Immunohistochemistry of paraffin-embedded mouse colon using Acetyl-Histone H4-K5 antibody (A11015) at dilution of 1:100 (40x lens).

Immunofluorescence analysis of CRC cells using Acetyl-Histone H4-K5 antibody (A11015).


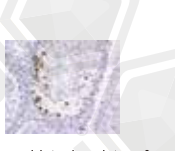

A11015

Western blot analysis of extracts from SK-BR-3 cells, using Phospho-HIST1H3J-S10 antibody (AP0197).

Immunohistochemistry of paraffin-embedded human breast carcinoma using Phospho-HIST1H3J-S10 antibody (AP0197).

AP0197

Western blot analysis of extracts of various cells, using Phospho-Histone H3-S10 antibody (AP0639).

Immunohistochemistry of paraffin-embedded mouse testis using Phospho-Histone H3-S10 antibody (AP0639) at dilution of 1:100 (40x lens).

Immunofluorescence analysis of HepG2 cells using Phospho-Histone H3-S10 antibody (AP0639).

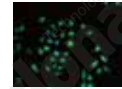
AP0639

Catalog	Name	Applications	Cross-Reactivity
A5908	ATM	WB	H
A9851	BAZ1B	WB IHC	H M R
A0212	BRCA1	WB IHC IF	H M
A11549	BRCA1	WB IHC	H M R
AP0232	Phospho-BRCA1-S1423	WB IF	H
A5811	BTAF1	WB IHC IP ChIP	H M R
A2246	CARM1	WB	H M R
A1098	CBX5	WB IF IP ChIP	H M R
A2062	CHUK	WB IHC IF	H M R
A1334	CREBBP	WB IHC IF	H M R
A1014	CSNK2A1	WB	H M R
A1133	CTCF	WB IF ChIP	H M R Mk
A12562	CTCF	WB IHC IP ChIP	H M R
A13272	CTCF	WB IHC IF ChIP	H M R
A2213	CUX1	WB	M R
A2715	DLK1	WB	H M R
A6578	DLK1	WB IHC	H M
A15050	DNMT1	WB IHC	H M R
A5495	DNMT1	WB IHC IF	H R
A2065	DNMT3A	WB IF	H M
A2899	DNMT3B	WB	H M
A2442	E2F1	WB IF IP	H R
A6151	E2F6	WB IHC IF IP ChIP	H M
A7266	EGR1	WB IHC	H M
A8513	EHMT1	WB	H M R
A1247	EHMT2	WB	H M R
A15056	EYA3	WB IF	H R
A7893	EYA3	WB IHC	H M R
A1763	FKBP1A	WB IHC	H M R
A0236	FOS	WB	H M
AP0038	Phospho-FOS-T232	WB IF	H M R
A2923	FOXA2	WB	H M R
A1638	GATA3	WB	H M R



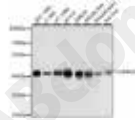
Immunohistochemistry of paraffin-embedded human breast cancer using BRCA1 antibody (A0212) at dilution of 1:100 (40x lens).

A0212



Immunofluorescence analysis of A549 cells using CHUK antibody (A2062). Blue: DAPI for nuclear staining.

A2062



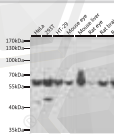
Western blot analysis of extracts of various cell lines, using CSNK2A1 antibody (A1014) at 1:1000 dilution.

A1014



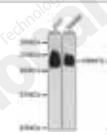
Immunohistochemistry of paraffin-embedded human stomach using DLK1 antibody (A6578) at dilution of 1:100 (40x lens).

A6578



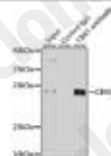
Western blot analysis of extracts of various cell lines, using EYA3 antibody (A7893) at 1:1000 dilution.

A7893



Western blot analysis of extracts of various cell lines, using Dnmt1 antibody (A15050) at 1:1000 dilution.

A15050



Immunoprecipitation analysis of 200ug extracts of HeLa cells using 1ug CBX5 antibody (A1098).

A1098

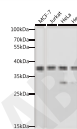


Immunofluorescence analysis of HeLa cells using CBX5 antibody (A1098). Blue: DAPI for nuclear staining.

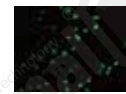


Immunoprecipitation analysis of 200ug extracts of MCF-7 cells using 3ug E2F6 antibody (A6151).

A6151



Western blot analysis of extracts of various cell lines, using E2F6 antibody (A6151) at 1:1000 dilution.

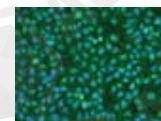


Immunofluorescence analysis of HeLa cells using E2F6 antibody (A6151).



Western blot analysis of extracts of HT-29 cells, using Phospho-BRCA1-S1423 antibody (AP0232) at 1:2000 dilution.

AP0232



Immunofluorescence analysis of U2OS cells using Phospho-BRCA1-S1423 antibody (AP0232) at dilution of 1:100. Blue: DAPI for nuclear staining.

Western blot analysis of extracts of various cell lines, using KAT5 antibody (A1678) at 1:1000 dilution.

A1678

Western blot analysis of extracts of various cell lines, using KDM5B antibody (A7772) at 1:1000 dilution.

A7772

Western blot analysis of extracts of various cell lines, using HDAC1 antibody (A0238).

Immunohistochemistry of paraffin-embedded human prostate cancer using HDAC1 antibody (A0238) at dilution of 1:100 (40x lens).

Immunofluorescence analysis of A549 cells using HDAC1 antibody (A0238). Blue: DAPI for nuclear staining.

A0238

Immunohistochemistry of paraffin-embedded human liver cancer using HDAC2 antibody (A2084) at dilution of 1:100 (40x lens).

Immunofluorescence analysis of A549 cells using HDAC2 antibody (A2084). Blue: DAPI for nuclear staining.

A2084

Western blot analysis of extracts of various cell lines, using HDAC3 antibody (A2139) at 1:1000 dilution.

Chromatin immunoprecipitation of extracts of 293T cell line, using HDAC3 antibody (A2139) and rabbit IgG.

Immunofluorescence analysis of MCF-7 cells using HDAC3 antibody (A2139). Blue: DAPI for nuclear staining.

A2139

Western blot analysis of extracts of various cell lines, using HIST3H3 antibody (A2348) at 1:1000 dilution.

Chromatin Immunoprecipitation analysis extracts of HeLa cell line, using HIST3H3 antibody (A2348) and rabbit IgG.

A2348

Immunoprecipitation analysis of 200ug extracts of MCF7 cells using 1ug IDH2 antibody (A7190).

Chromatin immunoprecipitation of extracts of 293T cell line, using IDH2 antibody (A7190) and rabbit IgG.

Western blot analysis of extracts of various cell lines, using IDH2 antibody (A7190) at 1:1000 dilution.

A7190

Catalog	Name	Applications	Cross-Reactivity
A9287	GTF3C4	WB	H
A6188	HAT1	WB IHC IF ChIP	H M R
A0238	HDAC1	WB IHC IF	H M R
A2084	HDAC2	WB IHC IF IP	H M R Mk
A2139	HDAC3	WB IHC IF IP ChIP	H M R
A2348	HIST3H3	WB IF ChIP	H M R Other (Wide Range)
A13765	HSF1	WB	H
A7190	IDH2	WB IHC IF IP ChIP	H M R
A11118	IRF3	WB IHC CHIP	H
A0524	IRF4	WB	M R
A11497	JAK2	WB IF	H M
A7694	JAK2	WB IHC	H M R
A11887	JUN	WB IHC IF IP ChIP	H M R Mk
A12979	JUNB	WB	H
A14566	JUNB	WB	H
A2224	KAT2A	WB IHC	H M R
A1678	KAT5	WB IF	H M R
A5823	KAT7	WB IF	H M R
A1156	KDM1A	WB IF IP	H M R
A15794	KDM1A	WB	H
A11960	KDM3A	WB	H
A12551	KDM4A	WB	H M
A7953	KDM4A	WB IHC	H M
A7772	KDM5B	WB	H
A15740	KDM5C	WB	H M R
A9911	KDM5C	WB ICC	H
A12763	KDM6B	WB	H
A12353	KMT2A	WB	H
A1435	KMT2A	WB	H M
A15442	SUV420H1	WB	H M R
A4987	LPCAT1	WB IHC	H M
A12963	MST1	WB	M R
A0309	MYC	WB IP ChIP	H M R

Catalog	Name	Applications	Cross-Reactivity
A0765	NCOA1	WB	H M
A11892	NFKB1	WB IHC IF IP FC ChIP	H M R
A11879	NOTCH1	WB IHC IP ChIP	H M R
A9981	NSD1	WB	H M
A0010	PARP1	WB	H M
A0942	PARP1	WB IHC	H M R
A0175	PIM1	WB	R
A1682	POU2F1	WB	M R
A12468	PPP1CA	WB IHC	H M
A2184	PPP1CA	WB IF	H M
AP0786	Phospho-PPP1CA-T320	WB	H M
A13531	PPP4C	WB IF IP	H M
A2109	PPP4C	WB IHC IF IP	H M R
A5543	PRDM14	WB IP ChIP	H M R
A0267	PRKCA	WB IHC IF	H
A13342	PRKCA	WB	H M R
A1520	PRMT5	WB IHC IF	H M R Mk
A2318	PRMT6	WB	H
A7420	RARA	WB IP ChIP	H
A13934	RBBP4	WB IF ChIP	H
A13456	RBBP7	WB IHC IF ChIP	H
A6967	RBBP7	WB IF IP ChIP	H M R
A7161	REST	WB	H
A5563	RNF2	WB IHC IP ChIP	H M R
A2325	RNF20	WB	H
A6443	RNF40	WB IHC IF ChIP	H
AP0800	Phospho-RPS-6KA5-S376	WB	H M R

Immunofluorescence analysis of U2OS cells using PRKCA antibody (A0267). Blue: DAPI for nuclear staining.

A0267

Western blot analysis of extracts of various cell lines, using PARP1 antibody (A0942) at 1:1000 dilution.

A0942

Western blot analysis of extracts of HeLa and NIH/3T3 cells, using Phospho-PPP1CA-T320 antibody (AP0786) at 1:2000 dilution.

AP0786

Immunohistochemistry of paraffin-embedded human tonsil using NFKB1 antibody (A11160) at dilution of 1:100 (40x lens).

A11160

Immunoprecipitation analysis of 200ug extracts of 293T cells using 1ug PPP4C antibody (A2109).

Western blot analysis of extracts of various cell lines, using PPP4C antibody (A2109) at 1:1000 dilution.

Immunofluorescence analysis of MCF-7 cells using PPP4C antibody (A2109) for nuclear staining.

A2109

Western blot analysis of extracts of various cell lines, using PPP1CA antibody (A2184) at 1:1000 dilution.

Immunofluorescence analysis of U2OS cells using PPP1CA antibody (A2184). Blue: DAPI for nuclear staining.

A2184

Immunoprecipitation analysis of 200ug extracts of 293T cells using 1ug RNF2 antibody (A5563).

Western blot analysis of extracts of various cell lines, using RNF2 antibody (A5563) at 1:1000 dilution.

Immunohistochemistry of paraffin-embedded human gastric cancer using RNF2 antibody (A5563) at dilution of 1:100 (40x lens).

A5563

Immunoprecipitation analysis of 200ug extracts of MCF7 cells using 1ug RBBP7 antibody (A6967).

Western blot analysis of extracts of various cell lines, using RBBP7 antibody (A6967) at 1:1000 dilution.

A6967

Western blot analysis of extracts of various cell lines, using RBBP4 antibody (A13934) at 1:1000 dilution.

Chromatin immunoprecipitation analysis of extracts of 293T cells, using RBBP4 antibody (A13934) and rabbit IgG.

A13934

Western blot analysis of extracts of various cell lines, using VRK1 antibody (A7745) at 1:1000 dilution.

A7745

Western blot analysis of extracts of various cell lines, using SETD7 antibody (A9985) at 1:1000 dilution.

A9985

Western blot analysis of extracts of various cell lines, using SIRT2 antibody (A12575) at 1:1000 dilution.

A12575

Immunohistochemistry of paraffin-embedded human lung cancer using SIRT2 antibody (A12575) at dilution of 1:100 (40x lens).

Immunoprecipitation analysis of 200ug extracts of HeLa cells using 3ug SIN3A antibody (A1577).

A1577

Western blot analysis of extracts of various cell lines, using SIN3A antibody (A1577) at 1:1000 dilution.

Immunofluorescence analysis of U2OS cells using SIN3A antibody (A1577). Blue: DAPI for nuclear staining.

Western blot analysis of extracts of various cell lines, using SUV39H2 antibody (A5855) at 1:1000 dilution.

A5855

Chromatin immunoprecipitation analysis extracts of 293T cell line, using SUV39H2 antibody (A5855) and rabbit IgG.

Western blot analysis of extracts of various cell lines, using SMAD2 antibody (A7699) at 1:1000 dilution.

A7699

Immunohistochemistry of paraffin-embedded mouse spleen using SMAD2 antibody (A7699) at dilution of 1:100 (40x lens).

Western blot analysis of extracts of various cell lines, using SIRT1 antibody (A11267) at 1:1000 dilution.

A11267

Immunohistochemistry of paraffin-embedded rat testis using SIRT1 antibody (A11267) at dilution of 1:100 (40x lens).

Catalog	Name	Applications	Cross-Reactivity
A11757	SETD2	WB	H M R
A3194	SETD2	WB	H M R
A8071	SETD3	WB	H M
A9985	SETD7	WB	H M R
A6145	SETDB1	WB IHC	H M R
A1577	SIN3A	WB IF IP ChIP	H M
A11267	SIRT1	WB IHC IF IP	H M R
A12988	SIRT1	WB	H
A12575	SIRT2	WB IHC	H M R
A14109	SIRT2	WB	M R
A7416	SIRT6	WB	H M
A11882	SMAD2	WB IF IP FC ChIP	H M R Mk
A6474	SMYD2	WB IF	H M
A11900	STAT2	WB IF IP FC ChIP	H M
A11867	STAT3	WB IHC IF IP FC ChIP	H M R Mk
A5855	SUV39H2	WB IP ChIP	H M
A15730	TAF1	WB	H M
A13366	TEAD1	WB IHC IF ChIP	H M
A4151	TEAD4	WB	H M R
A12779	TET2	WB	H M R
A7612	TET3	WB	H M
A12937	TP63	WB	H M
A12960	TP63	WB	M
A12968	TP63	WB	H M R
A6315	UBE2B	WB IHC	H M R
A7745	VRK1	WB IHC	H M R
A7938	WHSC1	WB IHC	H M

Western blot analysis of extracts of various cell lines, using TEAD1 antibody (A13366) at 1:1000 dilution.

A13366

Chromatin immunoprecipitation analysis extracts of HeLa cell line, using TEAD1 rabbit polyclonal antibody (A13366) and rabbit IgG.

Immunohistochemistry of paraffin-embedded mouse lung using TEAD1 antibody (A13366) at dilution of 1:100 (40x lens).



ABclonal Technology

Phone: 888-754-5670

Email: service@abclonal.com

Address: 86 Cummings Park Dr, Woburn, MA 01801

www.abclonal.com