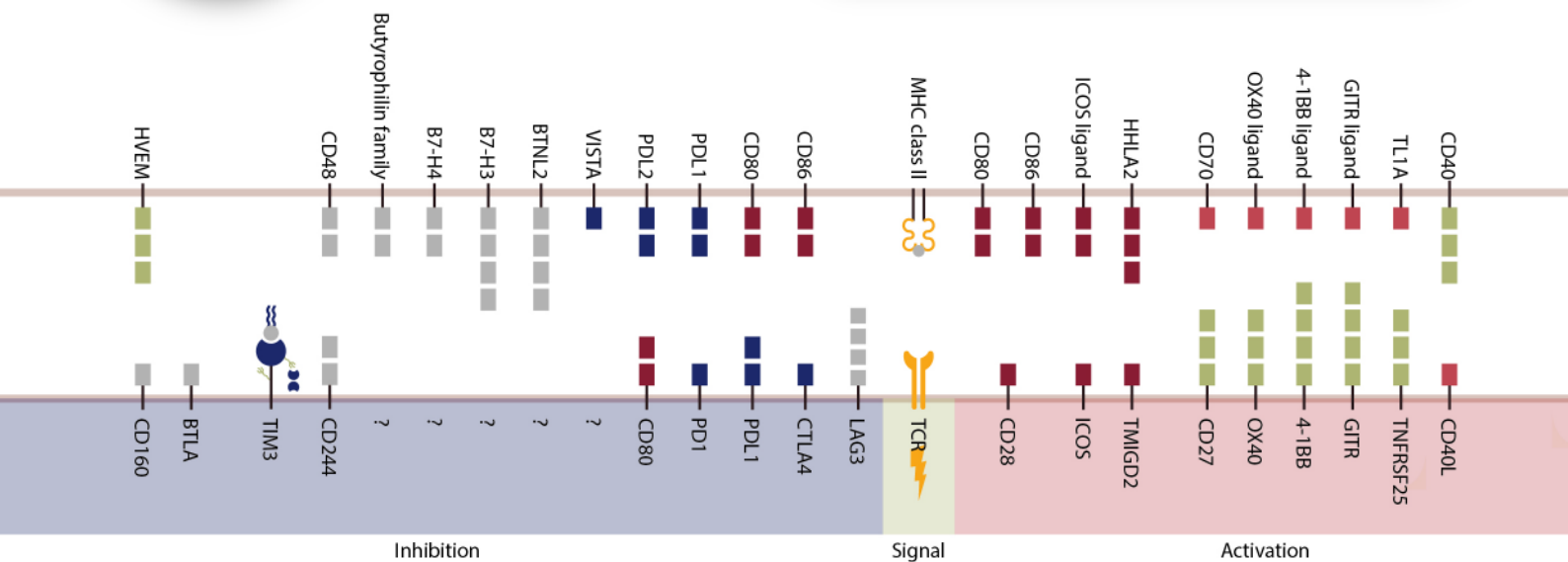




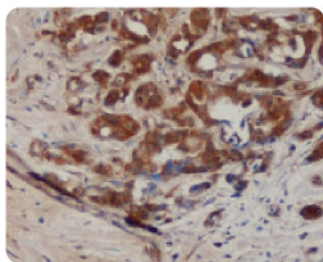
> Immune checkpoints

Antibody • Duo • ELISA kit

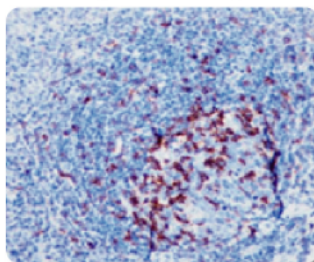


Inhibition Pathway

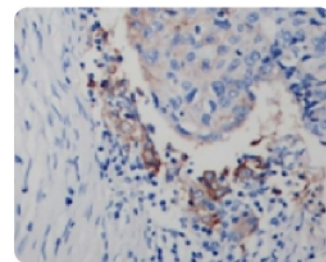
**B7-H4 antibody [MIH43]
(ARG23277)**



**PD-1 antibody [SQab1732]
(ARG66243)**



**PD-L1 antibody [SQab1716]
(ARG65862)**

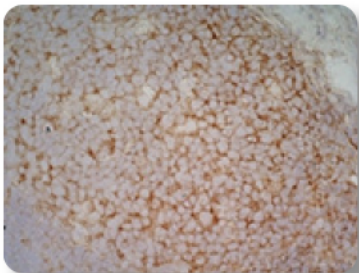


| Cat. No. | Prod.uct | Clonality | Reactivity | Application |
|----------|--------------------------|-------------|------------|--------------------------|
| ARG23449 | B7-H3 antibody [MIH42] | Mouse mAb | Hu | IHC-Fr, FACS |
| ARG52539 | B7-H3 antibody | Rabbit mAb | Hu | IHC-P, WB, FACS |
| ARG23277 | B7-H4 antibody [MIH43] | Mouse mAb | Hu | IHC-Fr, FACS, IHC-P |
| ARG55418 | BTLA antibody | Rabbit pAb | Hu | IHC-P, WB |
| ARG62874 | CD48 antibody [MEM-102] | Mouse mAb | Hu, NHuPrm | FACS, IHC-P, IP, WB |
| ARG65427 | CD160 antibody [BY55] | Mouse mAb | Hu | FACS, IP |
| ARG22978 | CD200 antibody [OX-104] | Mouse mAb | Hu | IHC-Fr, FACS |
| ARG22976 | CD200 antibody [OX-90] | Rat mAb | Ms | IHC-Fr, ELISA, FACS |
| ARG22523 | CD200R antibody [OX-102] | Mouse mAb | Rat | IHC-Fr, FACS, IP, WB |
| ARG23152 | CD244 antibody [2B4.69] | Mouse mAb | Hu | FACS, IP |
| ARG65419 | CTLA4 antibody [BNI3] | Mouse mAb | Hu | FACS, IP, IHC-Fr, ICC/IF |
| ARG22065 | CTLA4 antibody [9H10] | Hamster mAb | Ms | ELISA, FACS, IP, BL |

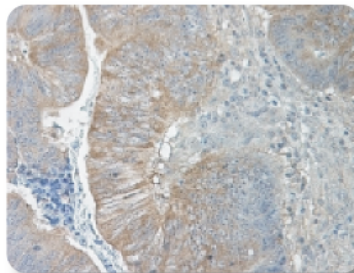
| Cat. No. | Prod.uct | Clonality | Reactivity | Application |
|----------|-----------------------------|-------------|------------|--------------------------|
| ARG22396 | HVEM antibody [CW2] | Mouse mAb | Hu | ICC/IF, WB |
| ARG56131 | PD-1 antibody [4D6] | Mouse mAb | Hu | ICC/IF, IHC-P, WB |
| ARG57875 | PD-1 antibody [J43.1] | Hamster mAb | Ms | FACS, FuncSt, IHC-Fr, IP |
| ARG57682 | PD-1 antibody [RM309] | Rabbit mAb | Hu | IHC-P, WB |
| ARG11015 | PD-L1 antibody [29E.2A3] | Mouse mAb | Hu | FACS, IHC-Fr, FuncSt |
| ARG22565 | PD-L1 antibody [MIH6] | Rat mAb | Ms | IHC-Fr, FACS, IP |
| ARG55930 | PD-L1 antibody | Rabbit pAb | Hu, Ms | FACS, ICC/IF, IHC-P, WB |
| ARG11024 | PD-L2 antibody [Z64P2D3*H4] | Mouse mAb | Hu, Ms | WB, IHC-P |
| ARG22561 | PD-L2 antibody [TY25] | Rat mAb | Ms | IHC-Fr, FACS, IP |
| ARG54798 | TIM-3 antibody | Rabbit pAb | Hu, Ms | IHC-P, WB |

Activation Pathway

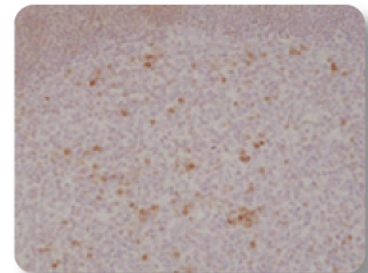
**CD40 antibody [LOB7/6]
(ARG22943)**



**4-1BBL antibody
(ARG66064)**



**OX40 antibody [RM313]
(ARG57684)**



| Cat. No. | Prod.uct | Clonality | Reactivity | Application |
|----------|----------------------------|-------------|-------------|---|
| ARG65823 | 4-1BB antibody [4B4 -1] | Mouse mAb | Hu | ELISA, FACS, IP |
| ARG23616 | 4-1BBL antibody [AT113 -2] | Rat mAb | Ms | FACS, IP |
| ARG66064 | 4-1BBL antibody | Rabbit pAb | Hu | ELISA, IHC-P, WB |
| ARG23634 | B7-H2 antibody [MIH11] | Mouse mAb | Hu | IHC-Fr, FACS |
| ARG65430 | CD28 antibody [CD28.2] | Mouse mAb | Hu, NHuPrm | FACS, FuncSt, ICC/IF, IHC -Fr, IP, WB |
| ARG22007 | CD28 antibody [37.51] | Hamster mAb | Ms | FACS, IP, Cell -Act , BL |
| ARG22943 | CD40 antibody [LOB7/6] | Mouse mAb | Hu, Dog | ELISA, FACS, IHC -Fr, IHC-P, IP |
| ARG20924 | CD40 antibody [1C10] | Rat mAb | Ms | BL, Cell -Act , FACS, IP |
| ARG65514 | CD40L antibody [MR -1] | Hamster mAb | Ms | FACS, FuncSt, ICC/IF, IHC, IP |
| ARG56102 | CD70 antibody [BU69] | Mouse mAb | Hu | ELISA, FACS, FuncSt, ICC/IF, IHC-Fr, IP |
| ARG56104 | GITRL antibody [DTA-1] | Rat mAb | Ms | FACS, ICC/IF |
| ARG23097 | OX40 antibody [OX -40] | Mouse mAb | Rat | FACS, IHC-Fr, IP |
| ARG57684 | OX40 antibody [RM313] | Rabbit mAb | Hu | IHC-P, WB |
| ARG65841 | OX40L antibody [RM134L] | Rat mAb | Ms | FACS, IP |
| ARG54394 | TNFRSF25 antibody | Rabbit pAb | Hu, Ms, Rat | ICC/IF, IHC-Fr, WB |