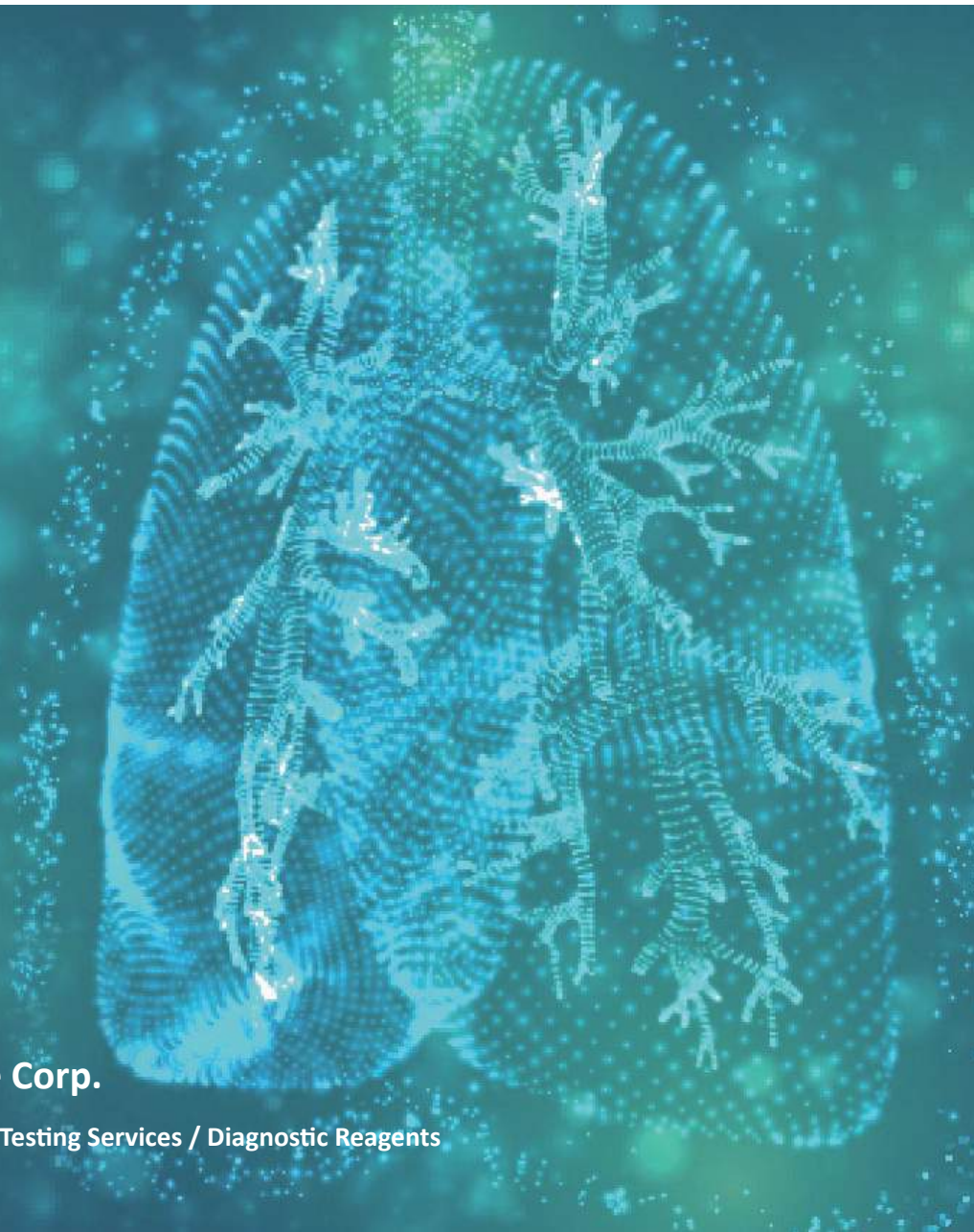




Cloud-Clone Corp.

Lung Cancer Biomarkers



Cloud-Clone Corp.

Assay Reagents / Testing Services / Diagnostic Reagents



ISO 13485



ISO 9001

Lung Cancer Biomarkers

According to statistics, lung tumor is one of the fastest growing malignant tumors with high morbidity and mortality. Among the world cancer death causes, lung cancer ranks first. Non-small cell lung cancer (NSCLC) accounts for about 85% of all diagnosed primary lung cancer, and small cell lung cancer (SCLC) accounts for about 20% to 25%. In recent years, with the deepening of lung cancer research, many tumor markers related to lung cancer have been found, which have important clinical value in the screening, diagnosis, efficacy detection and prognosis of lung cancer.

Cloud-Clone could provide multiple proteins, antibodies and ELISA kits of detection markers for Lung Cancer, which can be used in testing human, mouse, rat, porcine, caprine, etc.

1. Cloud-Clone on sale items that related to Lung Cancer Biomarkers

Cloud-Clone related index products of Lung Cancer Biomarkers

ATAD2	CEA	CK19	EGFR	NSE	LDHA	LDHB	PDGFRL
-------	-----	------	------	-----	------	------	--------

2. Excellent citations that related to Cloud-Clone Lung Cancer Biomarkers(Excerpt)

Item	Species	Journals	IF	Pubmed ID	Institute
NSE	Rat	Journal of Pineal Research	11.613	22220508	Department of Neurosurgery, Samsun Education and Research Hospital
LDHA	Mouse	EMBO Molecular Medicine	10.293	29248508	Department of Molecular Neuroscience, Graduate School of Medicine, Osaka University
CEA	Mouse	Analytical chemistry	6.042	27506255	State Key Laboratory of Analytical Chemistry for Life Science, Nanjing University
EGFR	Human	Molecular Cancer Therapeutics	5.365	26586721	MOGAM Biotechnology Institute, Yongin, Gyeonggi -do, Korea
LDHB	Human	PLoS One	2.766	24015209	TEDA International Cardiovascular Hospital and The Affiliated Hospital, Hangzhou Normal University

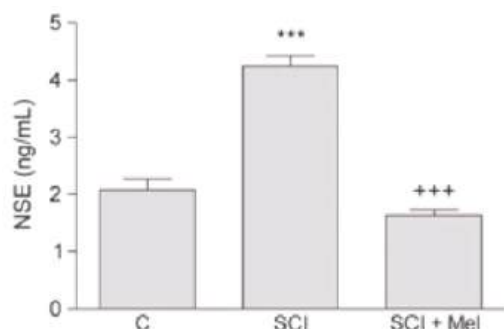


Figure . Serum neuron specific enolase(NSE) levels of the control, vehicle-treated spinal cord injury (SCI), and melatonin (Mel)-treated SCI groups.(Mehmet Ers, ahin, 2012)

(Product No.: SEA537Ra

Sample type: serum)

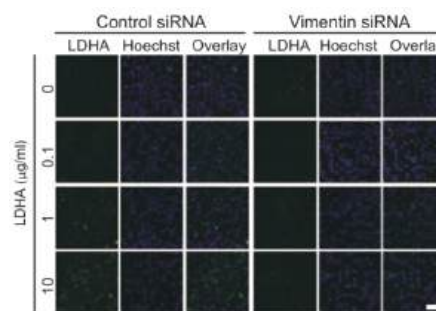


Figure . Interaction of LDHA with b.End3 cells transfected with vimentin siRNA. (Hsiaoyun Lin, 2017)

Graph shows quantification of the surface vimentin level shown in images; n = 4 each.

(Product No.: RPB370Mu01

Sample type: cell line)

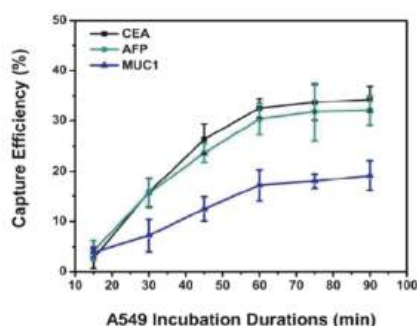


Figure . Capture efficiencies of MCF-7 incubation durations (15 min, 30 min, 45 min, 60 min, 75 min and 90 min, respectively) with Anti-CEA antibodies on electrode surface; (Hai-Wei Shi, 2016)

(Product No.: PPA150Mu01

Sample type: cell line)

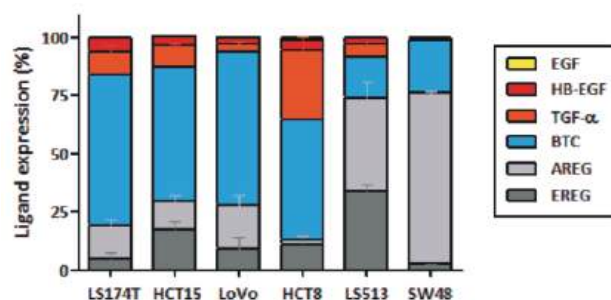


Figure . The basal levels of EGFR ligands expressed by the indicated cell lines were measured from the tumor xenografts.(Yangmi Lim, 2015)

(Product No.: SEA757Hu

Sample type: cell line)

3. Citation statistics that related to Cloud-Clone Lung Cancer Biomarkers(Excerpt)

Enolase, Neuron Specific (NSE)

Product	Species	Citation
Protein / Antibody / ELISA kit	Human, Rat, Mouse, Rabbit, Porcine, Dog, Chicken	42

Excerpt:

- Erşahin M, Özdemir Z, Özşavcı D, et al. Melatonin treatment protects against spinal cord injury induced functional and biochemical changes in rat urinary bladder[J]. Journal of pineal research, 2012, 52(3): 340-348. (IF=11.613)
- Chen K, Wang N, Diao Y, et al. Hydrogen-rich saline attenuates brain injury induced by cardiopulmonary bypass and inhibits microvascular endothelial cell apoptosis via the PI3K/Akt/GSK3 β signaling pathway in rats[J]. Cellular Physiology and Biochemistry, 2017, 43(4): 1634-1647. (IF=5.5)
- Erşahin M, Toklu H Z, Erzik C, et al. The anti-inflammatory and neuroprotective effects of ghrelin in subarachnoid hemorrhage-induced oxidative brain damage in rats[J]. Journal of neurotrauma, 2010, 27(6): 1143-1155.

Carcinoembryonic Antigen (CEA)

Product	Species	Citation
Protein / Antibody / ELISA kit	Human, Rat, Mouse	26
<p>Excerpt:</p> <ol style="list-style-type: none">1. Shi H W, Zhao W, Liu Z, et al. Temporal sensing platform based on bipolar electrode for the ultrasensitive detection of cancer cells[J]. Analytical chemistry, 2016, 88(17): 8795-8801.(IF=6.042)2. Liu L X, Fan G C, Zhang J R, et al. Ultrasensitive cathode photoelectrochemical immunoassay based on TiO₂ photoanode-enhanced 3D Cu₂O nanowire array photocathode and signal amplification by biocatalytic precipitation[J]. Analytica chimica acta, 2018, 1027: 33-40.(IF=5.123)3. Mansour M A, Bekheet S A, Al-Rejaie S S, et al. Ginger ingredients inhibit the development of diethylnitrosoamine induced premalignant phenotype in rat chemical hepatocarcinogenesis model[J]. Biofactors, 2010, 36(6): 483-490.		

Epidermal Growth Factor Receptor (EGFR)

Product	Species	Citation
Protein / Antibody / ELISA kit	Human, Rat, Mouse	18
<p>Excerpt:</p> <ol style="list-style-type: none">1. Lim Y, Yoo J, Kim M S, et al. GC1118, an anti-EGFR antibody with a distinct binding epitope and superior inhibitory activity against high-affinity EGFR ligands[J]. Molecular cancer therapeutics, 2016, 15(2): 251-263. (IF=5.365)2. Regiart M, Fernández-Baldo M A, Villarroel-Rocha J, et al. Microfluidic immunosensor based on mesoporous silica platform and CMK-3/poly-acrylamide-co-methacrylate of dihydrolipoic acid modified gold electrode for cancer biomarker detection[J]. Analytica chimica acta, 2017, 963: 83-92.		

