



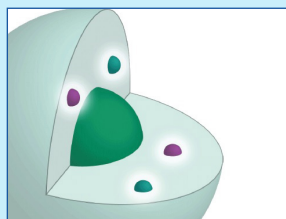
FIX&PERM® Cell Fixation and Permeabilization Kit

FIX&PERM® is a simple flow cytometry cell preparation procedure making use of two reagents. Reagent A gently fixes cells, while Reagent B permeabilizes them. The specific formulation of FIX&PERM® is optimized to reduce background and allows for the simultaneous addition of permeabilization medium and fluorochrome-labeled antibodies, enabling the staining of both membrane proteins and intracellular components such as cytoplasmic enzymes, nuclear proteins, oncoproteins, cytokines and immunoglobulins.

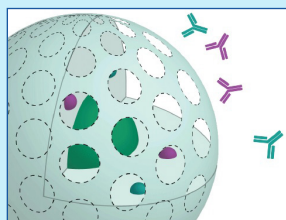
Kit Highlights

- Mildly fixes cells, preserving their flow cytometric scatter characteristics
- Allows for simultaneous characterization of intracellular and cell surface markers
- Rapid technique – the whole procedure can be carried out in less than one hour, preparing cells for analysis within 24 hours
- Stringent QC procedures – the quality of each lot is confirmed using carry-over control blood samples to ensure immunostaining and leukocyte population scatter characteristics are consistent and reliable from lot to lot
- All FIX&PERM® kits are CE Marked
- FIX&PERM® kits can be used with most monoclonal antibody conjugates, as well as our full range of FIX&PERM®-optimized antibodies targeting a wide variety of intracellular and membrane antigens

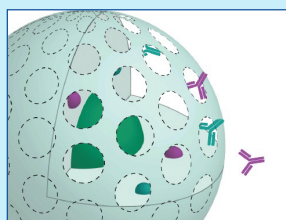
FIX&PERM® products can be ordered directly through our Exalpha brand or your local distributor. Find out more at absolutebiotech.com.



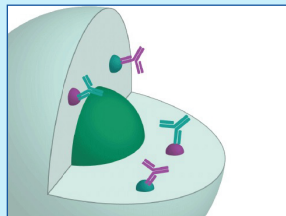
Reagent A gently fixes cells, preserving their forward and side-scatter characteristics



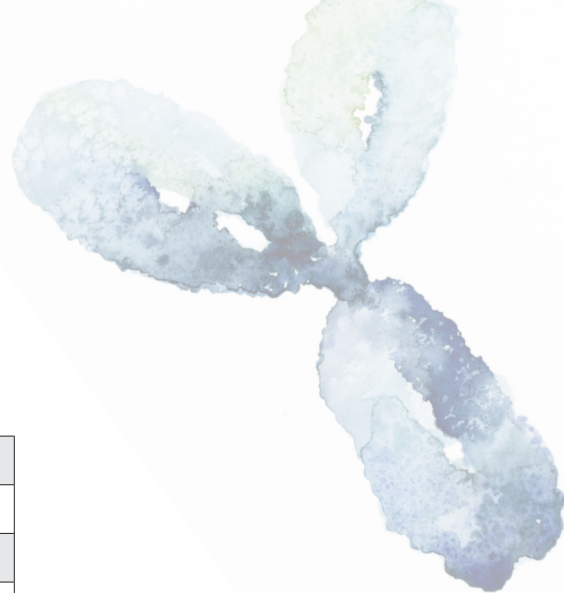
Reagent B and labeled antibodies are added



Reagent B permeabilizes the cell



Allows binding and detection of intracellular antigens



FIX&PERM® Catalog Numbers

Product	Size	Cat. Number
FIX&PERM® Kit	2 x 20 ml	GAS-002
FIX&PERM® 1000 Kit	2 x 100 ml	GAS-002-1
FIX&PERM® Reagent A (Fix)	1 x 100 ml	GAS-002A-1
FIX&PERM® Reagent B (Perm)	1 x 100 ml	GAS-002B-1
FIX&PERM® Sample Kit	2 x 5 ml	GAS-002M

Related Reagents

We offer mouse anti-human conjugated (PE/FITC) monoclonal antibodies optimized for use with FIX&PERM® kits, as well as Combi panels for dual immunostaining protocols.

Antibody Antigens:

- CD3
- CD22
- CD68
- IFN-gamma
- IL-1 beta
- Lactoferrin
- MPO-C2
- Lysozyme

Mouse anti-Human Combi Products:

- IgG Negative Control (FITC) & IgG Negative Control (PE)
- Anti-Myeloperoxidase-C2 (FITC) & anti-Lactoferrin (PE)
- Anti-Lysozyme (FITC) & anti-Lactoferrin (PE)
- Anti-Myeloperoxidase-C2 (FITC) & anti-CD3 (PE)
- Anti-Myeloperoxidase-C2 (FITC) & anti-CD22 (PE)

FIX&PERM® Procedure

For each sample to be analyzed, use 50 µl of whole blood, bone marrow or mononuclear cell suspension in a 5 ml tube.

1. Add 100 µl of Reagent A (fixation medium, stored and used at room temperature)
2. Incubate for 15 minutes at room temperature
3. Add 5 ml phosphate buffered saline and centrifuge cells for 5 minutes at 300 g
4. Remove supernatant and add to cell pellet 100 µl Reagent B (permeabilization medium) and 20 µl monoclonal antibody conjugate
5. Vortex at low speed for 1-2 seconds
6. Incubate for 15 minutes at room temperature
7. Wash cells with PBS as described above
8. Remove supernatant and resuspend cells in sheath fluid for immediate analysis or resuspend cells in 0.5 ml 1.0 % formaldehyde and store at 2-8 °C in the dark
9. Analyze fixed cells within 24 hours

About Absolute Biotech

Absolute Biotech is a new company that unites multiple life science brands into one organization specializing in antibody reagents and services. To learn more, please visit www.absolutebiotech.com.



Distributed by



www.2BScientific.com

+44 (0)1869 238 033 sales@2BScientific.com

Products are for Research Use Only – Not for therapeutic or diagnostic purposes