

# Cloud-Clone Active Proteins

Cloud-Clone Active proteins based on GMP level development, can provide a variety of specifications of protein, meet the needs of basic science experiments, drug screening, animal drug delivery and other experiments.

## Advantages

### High Purity



Purity ≥95%

### Multi-species



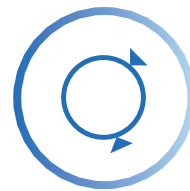
Rats, mice, rabbits, pigs, dogs, chickens, cows, etc.

### Multi-specifications



Meet the diversified experimental needs

### Multi-detections



Stimulating, binding, enzyme activity, etc.

### Data sharing



Internal test data is shared in real time

## Publications

Product No.	Targets	Journal	IF	Pubmed ID/DOI
RPB769Hu01	S100A6	Gastroenterology	33.883	10.1016/S0016-5085(18)33544-3
RPB792Hu01	S100A8	Gastroenterology	33.883	10.1016/S0016-5085(18)33544-3
RPB793Hu01	S100A9	Gastroenterology	33.883	10.1016/S0016-5085(18)33544-3
RPA568Hu01	S100A11	Gastroenterology	33.883	10.1016/S0016-5085(18)33544-3
RPE672Hu01	FSCN2	Nature Neuroscience	28.771	23334578
RPJ784Mu01	SDHA	Cell Stem Cell	25.269	29478844
RPA010Mu01	CTGF	Nature Communications	17.694	31249305
RPW803Mu01	ANGPTL8	Nature Communications	17.694	31388006
RPB305Mu01	C4B	Nature Communications	17.694	36280666
RPQ653Hu01	DEFb119	Cell Reports Medicine	16.989	10.1016/j.bioactmat.2022.08.018
RPA042Ra01	GCSF	Bioactive Materials	16.874	36513070
RPB370Mu01	LDHA	EMBO Molecular Medicine	14.260	29248508
RPB693Hu01	FABP4	Bone Research	13.363	35729106
RPA819Mu01	PTHrP	Cell Death and Differentiation	12.079	27740628
RPC006Hu01	IL8Rb	Theranostics	11.600	28900508
RPA626Hu01	CASP3	Theranostics	11.600	30026860

# Common Protein Activity Detection Methods

## 01 Binding activity

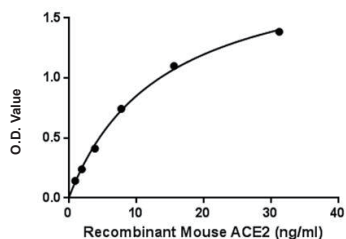
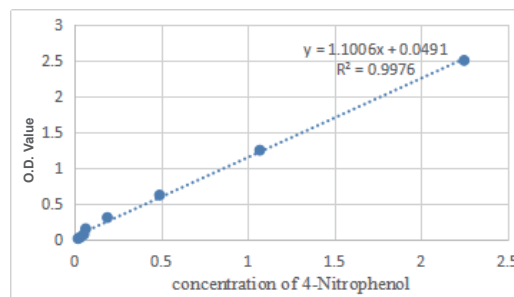


Figure 1. The binding activity of ACE2 with S1

The interaction between APB886Mu01 (ACE2 active protein) and recombinant S1 protein was detected by ELISA.

## 02 Enzyme activity



The activity of APC374Hu01 (CES1 active protein) was determined by measuring the ability of CES1 protein to hydrolyze 4-nitrophenylacetate (4-NPA) to 4-nitrophenol.

## 03 Stimulating activity

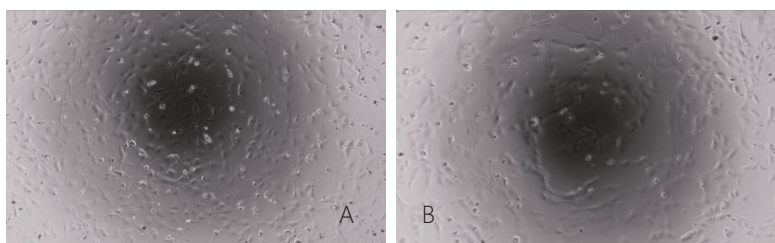
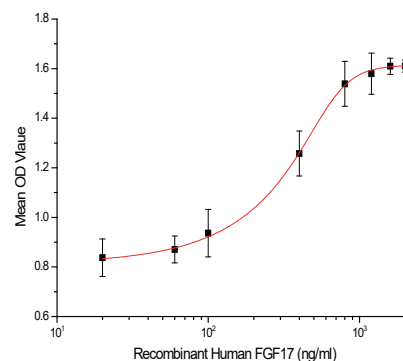


Figure 1. Cell proliferation of Balb/c 3T3 cells after stimulated with FGF17.  
(A) 3T3 cells cultured in DMEM, stimulated with 1000 ng/ml FGF17 for 48h;  
(B) Unstimulated Balb/c 3T3 cells cultured in DMEM for 48h.



Biological activity of APC910Hu01 (FGF17 active protein) was determined by Balb/c 3T3 cell proliferation assay. Cell proliferation was measured using a cell counting kit (CCK-8).

## Cloud-Clone Active Proteins (Part)

Product No.	Product Name	Product No.	Product Name
APA133Mu01	Active Tumor Necrosis Factor Alpha (TNFα)	APA071Hu01	Active Interleukin 1 Alpha (IL1α)
APA056Hu61	Active Interleukin 10 (IL10)	APA599Hu51	Active Granzyme A (GZMA)
APA105Hu01	Active Nerve Growth Factor (NGF)	APB236Hu51	Active Plasminogen (Plg)
APA134Hu01	Active Tumor Necrosis Factor Beta (TNFβ)	APA120Po61	Active Stem Cell Factor (SCF)
APA049Hu01	Active Interferon Gamma (IFNγ)	APB979Hu61	Active Hepcidin (Hepc)
APA563Hu61	Active Interleukin 1 Beta (IL1β)	APA899Ra61	Active Osteopontin (OPN)
APA899Hu61	Active Osteopontin (OPN)	APA073Ra61	Active Interleukin 2 (IL2)
APE375Hu01	Active Lemur Tyrosine Kinase 3 (LMTK3)	APA073Hu61	Active Interleukin 2 (IL2)

(For more information, please visit: [www.cloud-clone.com](http://www.cloud-clone.com))

Cloud-Clone Corp.

Original Manufacturer for Assay Reagents, Testing Services and Diagnostic Reagents

23603 W. Fernhurst Dr., Unit 2201, Katy, TX 77494, USA Tel: 001-832-538-0970 Toll free: 888-960-7402 (In the USA)

[www.cloud-clone.com](http://www.cloud-clone.com) [www.cloud-clone.us](http://www.cloud-clone.us)