



SuperLysing Buffer Solution

Caprico 10*SuperLysis Buffer solution(310116) is designed to lyse red blood cells in blood samples following direct immunofluorescence staining of human peripheral blood cells prior to flow cytometric analysis.

Dilute to 10* working solution with room temperature distilled water prior to use. 100ml of 10* concentrate will yield a quantity of 1* solution that is sufficient for at least 500 samples.

The **SuperLysing Buffer solution** contains diethylene glycol, formaldehyde, and methanol in appropriate ratio in proprietary buffer. The selective lysis of red blood cells in whole blood occurs due to the hypoosmotic shock to the red blood cells accompanied by fixation of white blood cells.

Product Performance:

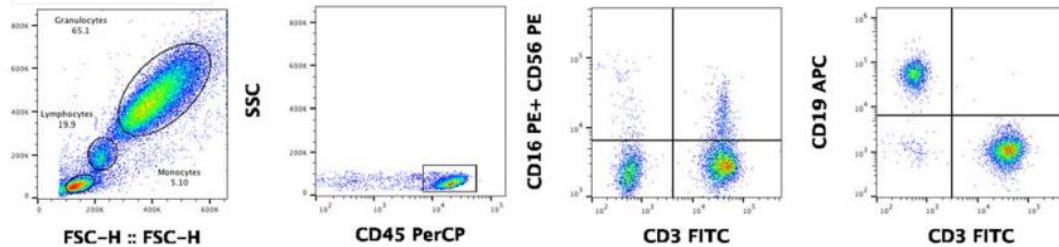


Figure 1. Cell Surface Markers Recognition of Leukocytes after Whole Blood Lysed by SuperLysing Buffer Solution. Whole blood samples were stained with antibodies CD3 FITC, CD16 PE/CD56 PE, CD45 PerCP and CD19 APC, and lysed using Whole Blood Lyse/Wash procedure. CD45 gated NK (CD16 +CD56+ CD3-), NKT (CD16+CD56+CD3+), B (CD19+CD3) and T (CD19-CD3+) cells are shown.

Frequencies of cell types in human blood:

Cell type	% of Leukocytes*
Lymphocytes	14 – 47 %
Monocytes	2 – 12 %
Granulocytes	35 – 80%

*cell type frequencies vary from donor to donor

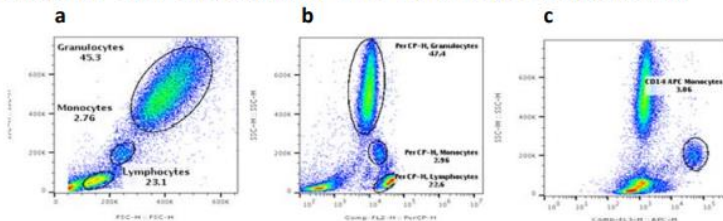
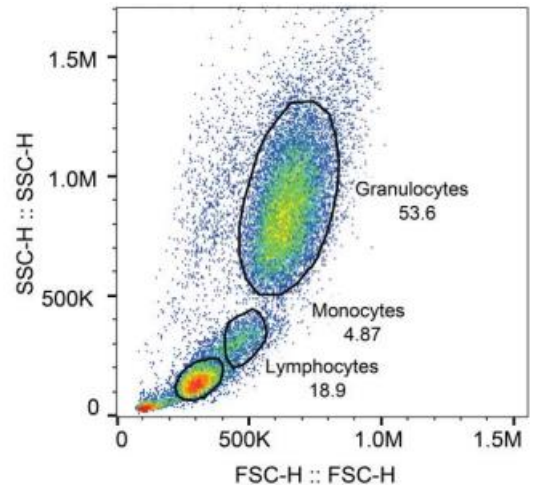


Figure 2. Cell Surface Markers Recognition of Leukocytes after Whole Blood Lysed by SuperLysing Solution. Whole blood samples were stained with CD45-PerCP (b)/ CD14 APC (c) antibodies and lysed using Whole Blood Lyse/Wash procedure.



Red Blood Cell Lysis Buffer (10x)

Caprico 10x RBC Lysing Buffer solution (310115) is designed to lyse red blood cells in blood samples. It is intended to be used as a 1x concentrated working dilution with deionized water. This product contains analytical grade ammonium chloride, potassium bicarbonate and EDTA in appropriate ratio which lyses only red blood cells in blood without affecting the physiological function of other white blood cells.



The thin outer layer of RBCs is permeable to ammonium chloride. The uptake of ammonium chloride increases cytoplasmic ions inside the RBC results osmotic lysis. However, the PBMCs remain in ionic equilibrium with the isotonic buffer and are thus not lysed.

Frequencies of cell types in human blood:

Cell type	Percentage of Leukocytes in healthy individuals
Lymphocytes	14 – 47 %
Monocytes	2 – 12 %
Granulocytes	35 – 80%

*cell type frequencies will vary from donor to donor



Caprico Biotechnologies is committed to 100% customer satisfaction.

For more information

✉ email us at info@capricobio.com or ☎ call 1-678-691-2143

🌐 www.capricobio.com

📍 400 Pinnacle Way, Suite 430 Norcross, GA 30071