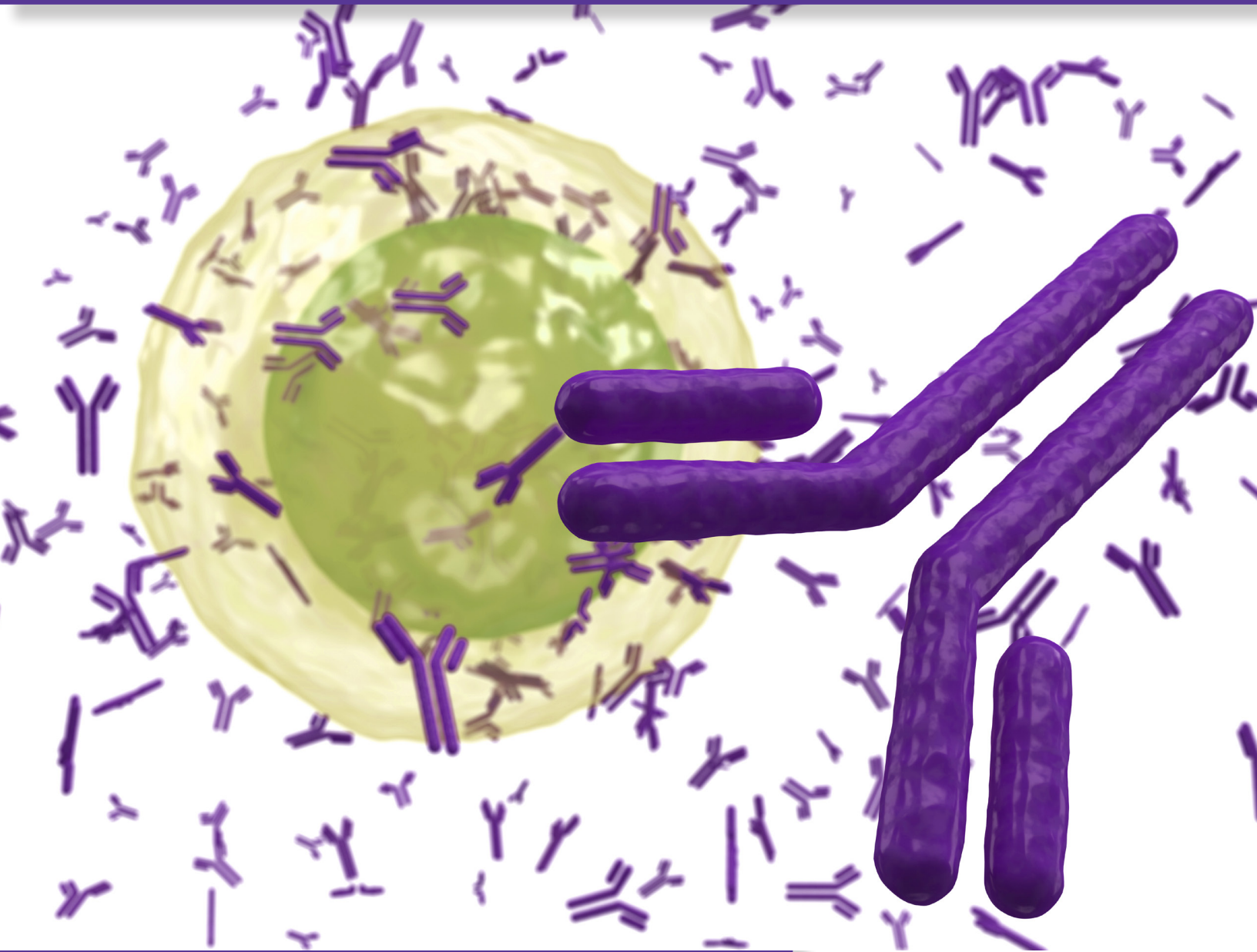


# Human Cell Surface Antibodies



Quality Antibodies for Quality Research

**SouthernBiotech**

[www.SouthernBiotech.com](http://www.SouthernBiotech.com) [info@SouthernBiotech.com](mailto:info@SouthernBiotech.com)



# Human Cell Surface Antibodies

Specificity	Clone	Cat. No.	Purified	LE/AF	Biotin	Pacific Blue™	Fluorescein	Alexa Fluor® 488	R-Phycoerythrin	Spectral Red®	PE/CY5.5	PE/CY7	PE/Texas Red®	Allophycocyanin	Alexa Fluor® 647	CY5	APC/CY5.5	APC/CY7	Alexa Fluor® 700
CD3	UCHT1	9515	✓	✓	✓	✓	✓	✓	✓	✓	✓	✓		✓	✓	✓		✓	✓
CD4	RFT4	9522	✓	✓	✓		✓	✓	✓	✓	✓	✓	✓	✓	✓	✓		✓	✓
CD5	UCHT2	9526	✓		✓	✓	✓		✓	✓				✓	✓				
CD8	UCHT4	9535	✓				✓		✓	✓									
CD8	RFT8	9536	✓	✓	✓	✓	✓	✓	✓	✓	✓	✓	✓	✓	✓	✓	✓	✓	✓
CD9	MM2/57	9310	✓	✓			✓		✓										
CD10 (CALLA)	CB-CALLA	9541	✓				✓		✓										
CD11a (Integrin α <sub>L</sub> )	38	9320	✓	✓	✓		✓		✓	✓				✓					
CD11a (Integrin α <sub>L</sub> )	I21/7*	1555	✓	✓	✓		✓		✓			✓							
CD11b (Integrin α <sub>M</sub> )	ICRF44	9546	✓		✓	✓	✓	✓	✓	✓				✓	✓				
CD11b (Integrin α <sub>M</sub> )	M1/70*	1561	✓	✓	✓	✓	✓	✓	✓	✓		✓		✓	✓	✓		✓	✓
CD11c (Integrin α <sub>X</sub> )	3.9	9551	✓		✓	✓	✓	✓	✓					✓					✓
CD13	22A5	9556	✓				✓		✓										
CD14	UCHM-1	9560	✓		✓		✓		✓	✓									
CD14	61D3	9561	✓	✓	✓	✓	✓	✓	✓	✓	✓	✓		✓	✓		✓	✓	✓
CD15	28	9565	✓		✓		✓		✓	✓									✓
CD16 (FcγRIII)	GRM1	9570	✓		✓		✓	✓	✓	✓					✓				✓
CD16 (FcγRIII)	3G8	9571	✓	✓	✓	✓	✓	✓	✓					✓					✓
CD19	SJ25-C1	9340	✓	✓	✓	✓	✓	✓	✓	✓	✓	✓	✓	✓	✓	✓	✓	✓	✓
CD19	SJ25-C1 - (F(ab') <sub>2</sub> )	9342	✓				✓		✓										
CD20	B-Ly1	9350	✓		✓	✓	✓	✓	✓	✓		✓		✓	✓			✓	✓
CD20	B-Ly1 - (F(ab') <sub>2</sub> )	9352	✓				✓		✓										
CD23 (FcεRII)	Tü1	9580	✓				✓		✓										
CD25 (IL-2Rα)	BC96	9582	✓			✓		✓	✓						✓				✓
CD26	134-2C2	9865	✓				✓		✓										
CD33	WM53	9590	✓	✓		✓	✓	✓	✓	✓	✓			✓	✓				✓
CD35	E11	9600	✓				✓		✓										
CD36	SMφ	9605	✓				✓												
CD42b (GPIbα)	MM2/174	9615	✓	✓	✓		✓		✓	✓				✓					
CD43 (Leukosialin)	DF-T1	9620	✓		✓		✓		✓	✓				✓					
CD44 (Pgp-1)	F10-44-2	9400	✓	✓	✓	✓	✓	✓	✓	✓		✓		✓	✓				✓
CD45 (LCA)	2D1	9624	✓		✓	✓	✓	✓	✓					✓	✓				
CD45 (LCA)	F10-89-4	9625	✓		✓		✓		✓	✓	✓	✓	✓	✓		✓			✓
CD45R	RA3-6B2*	1665	✓	✓	✓	✓	✓	✓	✓	✓	✓	✓	✓	✓	✓	✓	✓	✓	✓
CD45RA	F8-11-13	9630	✓				✓		✓	✓									✓
CD49b (Integrin α <sub>2</sub> , VLA-2α)	HAS-4	9426	✓				✓		✓										
CD49d (Integrin α <sub>4</sub> , VLA-4α)	7.2	9432	✓				✓		✓										
CD49d (Integrin α <sub>4</sub> , VLA-4α)	PS/2*	1520	✓		✓		✓		✓										

# Human Cell Surface Antibodies

Specificity	Clone	Cat. No.	Purified	LE/AF	Biotin	Pacific Blue™	Fluorescein	Alexa Fluor® 488	R-Phycoerythrin	Spectral Red®	PE/CY5.5	PE/CY7	PE/Texas Red®	Allophycocyanin	Alexa Fluor® 647	CY5	APC/CY5.5	APC/CY7	Alexa Fluor® 700	
CD49f (Integrin $\alpha_6$ , VLA-6 $\alpha$ )	4F10	9650	🧑				🧑		🧑											
CD51 (Integrin $\alpha_V$ )	13C2	9656	🧑				🧑		🧑											
CD54 (ICAM-1)	15.2	9441	🧑		🧑		🧑		🧑					🧑						
CD55 (DAF)	143-30	9661	🧑		🧑		🧑		🧑	🧑										
CD56 (NCAM)	MEM 188	9456	🧑		🧑	🧑	🧑	🧑	🧑	🧑	🧑									🧑
CD57 (NK-1)	NK-1	9665	🧑		🧑	🧑	🧑		🧑	🧑					🧑					
CD61 (Integrin $\beta_3$ )	PM6/13	9470	🧑				🧑		🧑											
CD62E/CD62P	1.2B6	9500	🧑		🧑		🧑		🧑	🧑				🧑						🧑
CD71 (TfR)	RVS-10	9670	🧑	🧑	🧑		🧑		🧑	🧑				🧑						
CD74	LN2	9775	🧑	🧑	🧑		🧑		🧑											
CD79b (Ig $\beta$ )	CB3-1	9710	🧑		🧑		🧑		🧑	🧑				🧑						
CD95 (Fas, Apo-1)	DX2	9730	🧑	🧑	🧑		🧑	🧑	🧑					🧑	🧑					
CD95 (Fas, Apo-1)	DX3	9735	🧑	🧑	🧑		🧑		🧑	🧑				🧑						
CD105 (Endoglin)	SN6	9811	🧑				🧑	🧑	🧑					🧑	🧑					
CD106 (VCAM-1)	1.G11B1	9510	🧑		🧑		🧑		🧑											
CD107a (LAMP-1)	H4A3	9835	🧑		🧑	🧑	🧑		🧑	🧑					🧑					
CD107b (LAMP-2)	H4B4	9840	🧑		🧑	🧑	🧑	🧑	🧑	🧑					🧑					🧑
CD138 (Syndecan-1)	SB55a	9824	🧑				🧑		🧑											
CD158e1 (KIR3DL1, NKB1)	DX9	9850	🧑					🧑	🧑					🧑	🧑					🧑
CD178 (FasL)	SB93a	12115	🧑				🧑													
CD235a (Glycophorin A)	CMRF14	9861	🧑						🧑											
CD253 (TRAIL)	SB91a	11040	🧑		🧑															
CD253 (TRAIL)	SB91c	11050	🧑																	
CD282 (TLR2)	2B4A1	11000	🧑	🧑	🧑		🧑		🧑					🧑						
CD284 (TLR4)	1E11	11010	🧑																	
CD286 (TLR6)	3B6	11020	🧑																	
KLRG1 (MAFA)	2F1*	1807	🧑		🧑		🧑		🧑											

\*Literature supports clone cross-reactivity to listed species, refer to technical bulletin for additional information

### **Corporate Offices**

160 Oxmoor Blvd  
Birmingham, AL 35209  
USA

### **Mailing Address**

PO Box 26221  
Birmingham, AL 35260  
USA

**Tel** 205.945.1774

**Fax** 205.945.8768

**Email** [info@SouthernBiotech.com](mailto:info@SouthernBiotech.com)

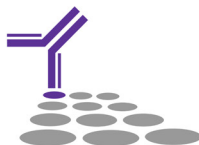
**Technical Support** [technical@SouthernBiotech.com](mailto:technical@SouthernBiotech.com)

**Website** [www.SouthernBiotech.com](http://www.SouthernBiotech.com)

**SouthernBiotech is ISO 9001:2015 Certified**

# **SouthernBiotech**

[www.SouthernBiotech.com](http://www.SouthernBiotech.com) [info@SouthernBiotech.com](mailto:info@SouthernBiotech.com)



Spectral Red® is a registered trademark of Southern Biotechnology Associates, Inc.  
Pacific Blue™ is a trademark of Thermo Fisher Scientific, Inc. and its subsidiaries  
Alexa Fluor® and Texas Red® are registered trademarks of  
Thermo Fisher Scientific, Inc. and its subsidiaries  
Cy® is a registered trademark of GE Healthcare  
MM-HCD-04