



# IMAGING

**CBI products work great with imaging!**

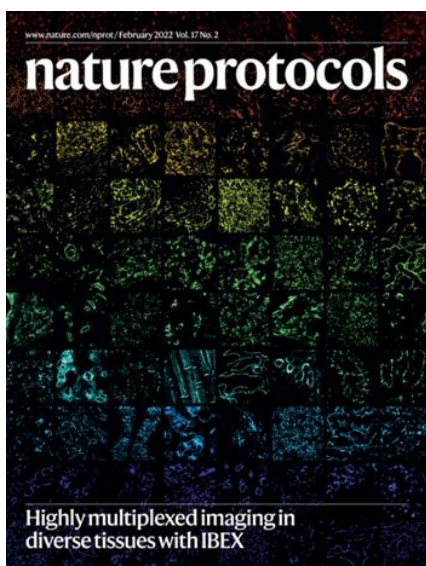
**Publication in “Nature protocols”**

## **Customer Case | Citation | IBEX: an iterative immunolabeling and chemical bleaching method for high-content imaging of diverse tissues**

Keywords: iFluor594/imaging

Published in the Journal: Nature protocol r, IF. 13.491

NATURE PROTOCOLS | VOL 17 | FEBRUARY 2022 | 378–401 | [www.nature.com/nprot](http://www.nature.com/nprot)



### **IBEX on the cover**

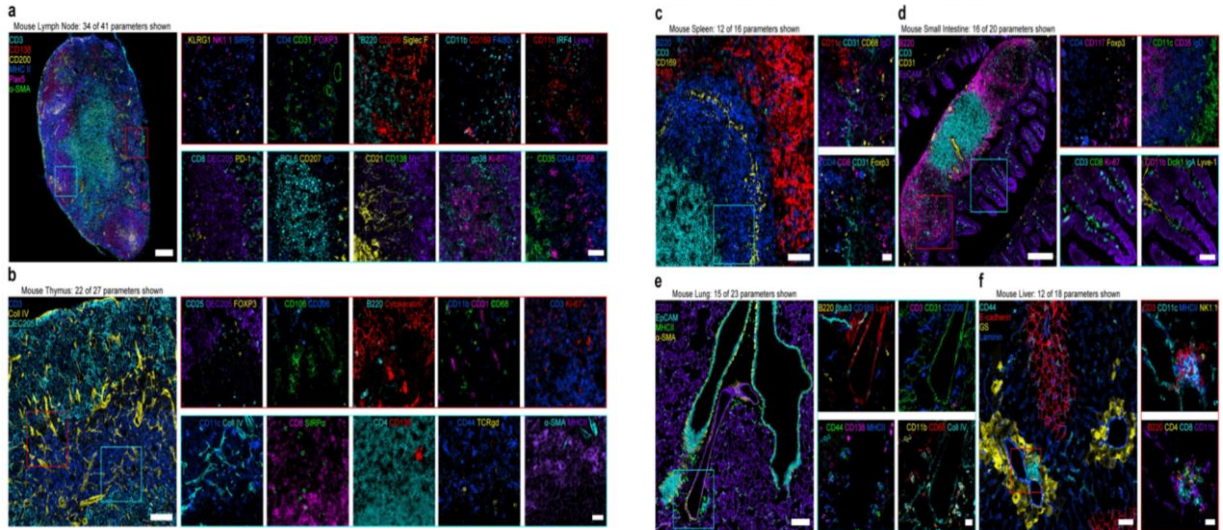
The author & our valuable customer said:  
“iFluor™ 594, an excellent conjugate and now staple of our IBEX imaging panels. It is critical to our ability to multiplex.”

You can clearly see how CBI antibodies can be applied to tissue imaging.

<b>CBI Products</b>	<b>CBI #Cat</b>	<b>IBEX panels for human organs</b>
CD10 PE	103925	Lymph node
CD45 PE-iFluor™ 594	1016185	Lymph node
CD68 iFluor™ 594	1064135	Spleen/ Human Liver/ Lymph node/Skin/Kidney
Anti-HLA-DR iFluor™ 594	1032135	Spleen/ Lymph node/ Jejunum
CD45 iFluor™ 594	1016135	Spleen/ Lymph node/ Jejunum/Skin
CD3 iFluor™ 594	1053135	Human Liver/ Lymph node/ Jejunum/Skin
CD66b iFluor™ 594	1075125	Jejunum/Kidney



## Highly multiplexed imaging of diverse mouse tissues using IBEX



Catalog items with the same clones will likely work for imaging if the following conjugates are used:

- iFluor™ 488
- PE
- PE/iFluor™ 594
- iFluor™ 594
- iFluor™ 647

**200 tests & ASR & free test size available!**



QUALITY



EFFICIENCY



FLEXIBILITY



AFFORDABILITY

Caprico Biotechnologies is committed to 100% customer satisfaction.

For more information

✉ email us at [info@capricobio.com](mailto:info@capricobio.com) or ☎ call 1-678-691-2143

🌐 [www.capricobio.com](http://www.capricobio.com)

📍 400 Pinnacle Way, Suite 430 Norcross, GA 30071